



# Center for Urban Population Health

*Working together to improve the health of communities*

## 2007 Annual Report





# Center for Urban Population Health

---

August 2008



Dear Colleagues and Partners:

On behalf of the Center for Urban Population Health, it is my pleasure to present to you the 2007 Annual Report. Since the Center's inception in 2001, the breadth and depth of research and educational initiatives on which the Center and its three institutional partners have collaborated has grown – and 2007 was no exception. This year's annual report will provide an overview that demonstrates this continued growth both programmatically and financially.

With increasing financial and resource constraints on community-based organizations, governments and universities, there is a need for these sectors to work together to produce improved health outcomes for Milwaukee and the state. This report highlights the synergy that the Center and its infrastructure generate for researchers and urban community leaders. With over 100 active projects in 2007, this report can only highlight a few. To read more about any of our projects, please visit our newly updated website at [www.cuph.org](http://www.cuph.org) that we proudly unveiled in the past year.

As we enter 2008, the Center will continue to lead and collaborate in a wide variety of population health research and education initiatives. However, we plan on focusing resources around the concerns of three particular populations that are in need of immediate attention in Milwaukee and across the State:

- Maternal, Infant and Child Health
- Youth Violence and Public Safety
- Healthy Aging

To do this the Center is working closely with UW's transformed School of Medicine and Public Health, UW-Milwaukee's various academic departments and centers, as well as Aurora Health Care's integrated health system. In addition, we are participating actively with UW-Milwaukee as it moves forward with the creation of a School of Public Health (SPH). New faculty recruited for the SPH will split their time between UWM and the Center, thus continuing to increase the health research capacity of Milwaukee.

Sincerely and fondly,

A handwritten signature in black ink that reads "Ron A. Cisler".

Ron Cisler, PhD

Director, Center for Urban Population Health  
Associate Professor of Health Sciences, UW-Milwaukee  
Associate Professor of Population Health Sciences,  
UW School of Medicine and Public Health

# TABLE OF CONTENTS

---

<b>Letter from Director .....</b>	<b>2</b>
<b>Mission and Vision .....</b>	<b>5</b>
<b>Capacity Building .....</b>	<b>6</b>
<b>Community Capacity .....</b>	<b>7</b>
<b>Research Capacity .....</b>	<b>11</b>
<b>Human Capacity .....</b>	<b>25</b>
<b>Technical Capacity .....</b>	<b>31</b>
<b>Knowledge Capacity .....</b>	<b>32</b>
<b>Financial Capacity .....</b>	<b>35</b>

# MISSION AND VISION

---

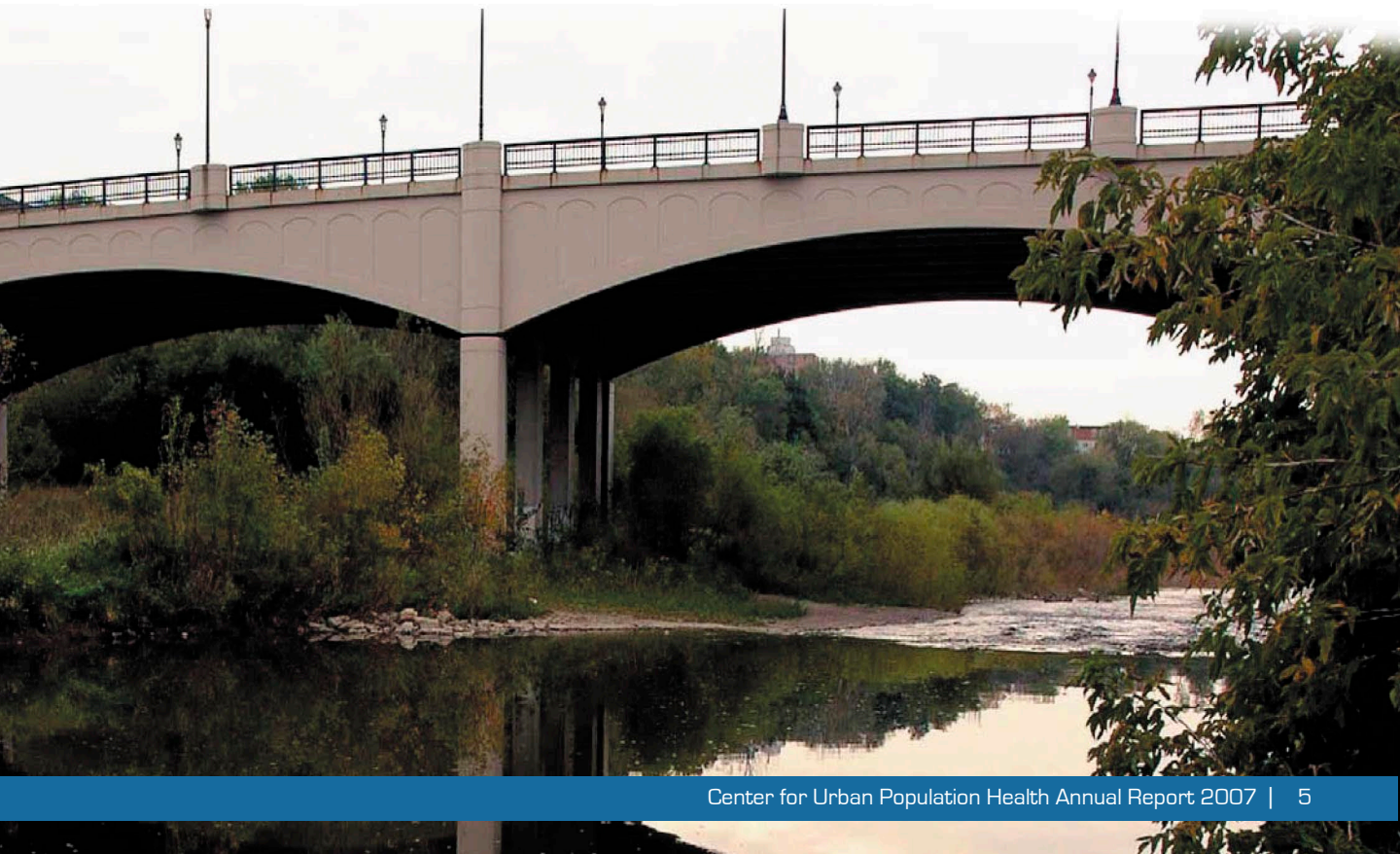
**Mission:** Advancing population health research and education to improve the health of urban communities.

**Vision:** To be a destination where researchers can lead innovative, community-connected urban population health research and education.

**Principles and Values:**

The Center embraces these principles and values:

- Promoting a **population health framework** as a unifying approach for addressing health determinants, interventions and health outcomes;
- Forging **partnerships** with community and academic experts from diverse organizations, backgrounds, perspectives and disciplines;
- Creating an **environment of innovation**;
- **Translating research** into effective policies, programs and practices; and
- Working to **reduce health disparities**.



# CAPACITY BUILDING

Since the inception of the Center for Urban Population Health in 2001, the Center has been steadily building its organizational capacity and the capacity of its partners through its many collaborations and initiatives. This is reflected in the strategic goals that the Center adopted after a comprehensive two-year planning process. Today, as a destination for interdisciplinary population health research, the Center has the talent and resources to provide leadership and research infrastructure for high priority, emerging initiatives.

The following projects highlight the connections facilitated through the Center among researchers, health care systems, public health professionals and the community to assess population health issues and systematically provide recommendations for further research, interventions, and/or policy.



***“The Center is a valuable resource that has helped me to connect and collaborate with other institutions to perform research aimed at benefiting the patients of Aurora.”***

*- Matt Tector, PhD, Research Scientist, Aurora Health Care, Inc.,  
Transplant Research Lab*

# Community Capacity

The Center's first strategic goal is *Strengthening and expanding community and institutional partnerships*. A good example of how the Center advances this goal is the special initiative we have established on high-risk youth behaviors and public safety. This focus is especially critical to the health of urban communities like Milwaukee.

Although homicides and forcible rape were down for the City of Milwaukee, overall violent crime was up 28% between 2005 and 2006 according to the FBI's crime statistics report by metropolitan statistical area. The effects of this increase ripple across the population health of Milwaukee. Not only does it have implications for the use of our health care systems and budgets, it impacts many other determinants of health. These include the level of social connectedness Milwaukeeans feel and their general sense of safety and security. This can directly affect their level of comfort in pursuing outside physical activities or socializing with their neighbors, for example. In broader terms, violent crime affects Milwaukee's ability to attract and retain employers and taxpayers, which is directly linked to the unemployment and poverty issues facing much of the city. As part of the Center's commitment to improving the health of urban communities, violence and public safety have been important targets of our research, especially in the area of reducing harm to infants and youth. Following are three current initiatives that address violence in Milwaukee.

---

## Understanding Youth Violence Using African American Traditions

---

Co-Principal Investigators: **Deborah Blanks, MS (SDC) and Ron Cisler, PhD (CUPH)**

Project Coordinator: **Ella Dunbar, MS (SDC)**

Researcher: **Jessica Bergstrom, MPH (CUPH)**

Analyst: **Barbra Beck, PhD (MHD & CUPH)**

The Social Development Commission (SDC) and four other community organizations (Arms Around Amani Neighborhood Association, New Horizon Center, Inc., Greater Galilee Missionary Baptist Church, and Mothers Against Gun Violence) have developed and carried out this community-based research project under the direction of Deborah Blanks and Ella Dunbar from the SDC.

The participating community organizations completed interviews with both youth and adult community members about their perspectives on youth violence. A team of researchers at the Center conducted a qualitative analysis of the interviews to identify common themes. The research found that both the youth and adults are cognizant of the destructive effects of violence on their community and suggested respectful and equal partnerships between youth and adults as central to the solution.

This project has brought together youth serving community-based organizations in Milwaukee with Center researchers in a way that has empowered the community to be active participants in research and has built the community's capacity to look deeper into a serious issue facing Milwaukee's youth.

The Social Development Commission shared the common themes gained from this research at their Poverty Symposium held in October 2007. In addition, Dunbar, Bergstrom and others have submitted an abstract about the project to the 2008 Public Health Partners Conference. The information gained from these themes has the potential to inform policy makers, suggest prevention interventions, and provide a unique and often unheard perspective on reducing violence.



Ella Dunbar, MS,  
Project Coordinator

***“I appreciate the collaborative opportunities with the Center that help our agency build bridges and better connect with the community.”***

*-Ella Dunbar, Social Development Commission*

---

## Milwaukee Homicide Review Commission

---

Co-Principal Investigators: **Mallory O'Brien, PhD (MPD) and Ron Cisler, PhD (CUPH)**  
Project Coordinator: **Laurie Woods (MPD)**

Homicide is the leading cause of death among 15- to -24-year-old males in Milwaukee and there are formidable race and gender disparities in homicide incidents. In 2004, leaders in Milwaukee including the Mayor, Police Chief, and District Attorney assembled a working team of professionals charged with reducing homicide in Milwaukee through the development of a homicide review process. The group approached the Center to apply for funding, and in 2004, received a grant from the University of Wisconsin School of Medicine and Public Health's Wisconsin Partnership Fund for a Healthy Future (WPF) with the Center's director, Ron A. Cisler, as academic partner.

The *Milwaukee Homicide Review Commission* (MHRC) is a multi-level, multi-disciplinary, and multi-agency homicide review process aimed at reducing the occurrence of homicides in Milwaukee. It includes Milwaukee area law enforcement groups as well as key community stakeholders working together to promote healthy and safe neighborhoods and reduce the occurrence of homicides in Milwaukee County.



One issue identified early on was the inability to share data across criminal justice agencies to prevent and control crime. Mallory O'Brien, MHRC project leader, led a Needs Assessment with Dale Steber, MS, Supervisor of the Center's



Information Technology Core. Steber and others at the Center conducted a thorough literature review of data-sharing issues and solutions across the country. They also interviewed key stakeholders in the Milwaukee area to identify concerns around data sharing. The issues and recommendations based on the literature review were shared in a report to the Homicide Review Commission and others in early spring 2007. The Needs Assessment was funded through the Wisconsin Office of Justice Assistance by the federal Byrne Justice Assistance Grant (JAG) Program.

In the past two and one-half years, Milwaukee County criminal justice agencies and community-based organizations have benefited from an increase in communication and improved relationships brought on by the formation of the MHRC. For example, in the summer of 2006, when MHRC data analysis determined that 10% of homicides occurred in or directly outside a tavern, the Milwaukee Police Department ordered a directed patrol mission to increase checks on the most problematic taverns in each district. After the first six months of the mission, the participating police districts experienced a 60% decline in homicides and other tavern-related incidents.

In November 2007, Dr. O'Brien accepted an award for the *Outstanding Wisconsin Population Health Practice Paper* from the University of Wisconsin Population Health Institute's Improving Wisconsin's Health: Prevention, Policy and Priorities for Research Conference for her and her colleagues' paper: O'Brien, M., Woods, L., & Cisler, R.A. (2007). The Milwaukee Homicide Review Commission: An Interagency Collaborative Process to Reduce Homicide. *Wisconsin Medical Journal*, 106(7), 385-388.

In 2007, the MHRC received \$474,164 in additional funding from the Wisconsin Partnership Fund to expand the community's role in the MHRC by strengthening community participation in the review process as well as creating a mini-grant mechanism for community-based organizations to assist with the implementation of the MHRC's eight recommended prevention strategies. The Wisconsin Partnership Fund, Project Safe Neighborhoods, and the Violence Against Women Act currently fund the MHRC.



Mallory O'Brien accepts the award for Outstanding Wisconsin Population Health Practice Paper.

***"It's all about making the city a better place, reducing the violence we're seeing, reducing the homicides we're seeing,"***  
***-Mallory O'Brien, the Harvard School of Public Health researcher leading the project.***

---

## Safe Mom, Safe Baby

---

Co-Principal Investigators: **Tina Mason, MD, MPH, MHRC (AUWMG) and Jacquelynn Tillett, CNM, ND, FACNM (AUWMG)**

Project Manager: **Alice Kramer, RN, MS, CNM (AHC)**

Evaluator: **Jessica Bergstrom, MPH (CUPH)**

Intimate partner violence (IPV) is a significant risk factor for maternal and neonatal morbidity and mortality. Increased screening for IPV among this population can lead to disclosure, and then women can be connected to support services that promote safety planning and adoption of risk-reducing behaviors.

*Safe Mom, Safe Baby* is an implementation project funded by the Wisconsin Partnership Fund for a Healthy Future that began in June 2005. The project supports a collaboration among the Task Force on Family Violence, Aurora Health Care (AHC), Aurora UW Medical Group (AUWMG), Milwaukee Birthing Project, Prenatal Care Coordination



Tina Mason MD, MPH  
Co-Principal Investigator



Program, the UW Midwifery Clinic at Aurora Sinai Medical Center, and the Center for Urban Population Health to identify pregnant women and new mothers at risk for IPV and provide targeted assessments, case management, education, prenatal care, advocacy, mentors, and effective stage-based clinic and in-home interventions to improve the health and safety outcomes of women and their children. The Center is involved in the evaluation and data management for the project.

In 2007, *Safe Mom, Safe Baby* received \$400,944 in additional funding from the Wisconsin Partnership Fund to expand the program across sites and to continue planning for sustainability of the project.

***“From the start, the Center has always been easy to work with, dependable, thorough, and responsive to our needs. As time progressed and data needed to be to gathered and interpreted to sustain our program, the Center staff responded in a quick and timely fashion.”***

*- Nancy Doucete Wilkinson and Tina Watts, Safe Mom Safe Baby Project*

## Research Capacity

The Center's second strategic goal is *Expanding capacity to conduct interdisciplinary population health research along a continuum, from health services research to community-based participatory research*. To expand capacity, there is a need to increase the number of trained and experienced population health researchers not only in Milwaukee but also in Wisconsin as a whole. To meet this goal, the Center provides training opportunities for medical and public health students, a funding mechanism for local researchers, research infrastructure, and appropriate linkages to the community so that all involved succeed.

The Wisconsin Partnership Fund for a Healthy Future's Medical Education and Research Committee awarded the Center a little over \$1 million in 2006 to implement a *Public Health Development Plan*. This funding has not only allowed the Center to further build its infrastructure and expertise, it has supported the creation of the *Center Scientist Development Program*. The program's purpose is to engage promising new UW-Milwaukee (UWM) investigators in population health research through significant salary and/or research assistant support. In 2007, the Center funded six projects for a total of \$165,000. Each project and its progress to date are outlined below. UWM disciplines represented include the College of Health Sciences (CHS), the College of Nursing (CON), and the College of Letters & Sciences (L&S).

---

### Fetal Infant Mortality Review (FIMR) in Racine

---

Investigator: **Teresa S. Johnson, PhD, RN (UWM CON)**

Collaborators: **Wheaton Franciscan Healthcare-All Saints; City of Racine Health Department**

The purpose of this project is to develop a formal, multidisciplinary, systematic evaluation of fetal deaths to explore the numbers, and causes of high mortality rates for African American infants in the City of Racine. Funding from the Center provides a Principal Investigator (Dr. Johnson) for the Racine Fetal Infant Mortality Review (FIMR) project.

Since receiving funding in May 2007, Dr. Johnson and colleagues have attended the National FIMR conference, collected data from over 25 women or infants, and are in the process of developing an electronic abstraction method as well as scan sheets to assist with efficient data collection. In-home interviews are also being conducted. Dr. Johnson has presented at a town hall meeting held in Racine in June 2007 and participated in a "just in time hearing" for State legislators in July to provide them with data about the severity of the problem and the impact on families of fetal and infant mortality in Racine.



Teresa S. Johnson, PhD, RN  
Investigator

---

## **An Academic Partnership with Aurora Health Care's Information Technology and Care Management Teams**

---

Investigators: **Timothy Patrick, PhD, Health Administration and Informatics (CHS)**  
Collaborators: **Dale Steber, MS, Supervisor, Information Technology (CUPH); Floyd Frost, PhD (CUPH/AHC); and Patrick Falvey, PhD (AHC)**

This project will assist Aurora Health Care (AHC) in determining which of several unused or under-utilized demographic fields in the Aurora Health Care data warehouse might be used for internal quality or patient population outcomes research purposes. The research team will recommend which fields might serve such purposes, and standard code sets for those fields. Later developments could be to implement the fields and carry out, for quality control purposes, validity and reliability studies of data collected via them.

In 2007, a literature review was conducted, frequency counts were run on the AHC database variables, a mapping table has been created, and preliminary recommendations have been provided to Dr. Falvey. In addition, Dr. Patrick and colleagues have presented this and related academic work at three different venues.



**Timothy Patrick, PhD.**  
Investigator

---

## **Improving the Health of Children with Special Health Care Needs in Birth to 3 Programs Through Health Literacy and Maternal Depression Screening**

---

Investigator: **Jennifer Runquist, PhD, RN (CON)**

Collaborators: **Kris A. Barnekow, PhD, Department of Occupational Therapy (CHS); Timothy B. Patrick, PhD, Health Administration and Informatics (CHS); Paula M. Rhyner, PhD, Department of Communication Sciences and Disorders (CHS); Susan E. Cashin, PhD, Associate Scientist (CHS); and Lutheran Social Services of Wisconsin and Upper Michigan, Inc. (LSS)**

This project supports collaborations between UWM faculty and LSS's Birth to 3 Program to develop a plan to assess levels of health literacy and symptoms of maternal depression and posttraumatic stress in Birth to 3 program clients. This project will also move the work of maternal depression screening to the systems level through development of the structural components needed to support the input of depression screening information into the Early Childhood Integrated Database System (ECIDS) being developed for Milwaukee County.



**Jennifer Runquist, PhD, RN, Mary Foley, Kerri McDermott, Lori Sandine**

*My experience with the Center thus far has been outstanding. As a new researcher, the Center first provided me with funding to secure some pilot data in an area that aligned with the interests of the Center. However, the Center Scientist funding opened a door through which I have secured resources beyond simply funding. Since joining the Center, I have submitted two grant proposals where I will rely on and contribute to the Center infrastructure should those proposals be funded. If it were not for the Center Scientist Program, I would not have had the benefit of both current and future opportunities to advance an interdisciplinary team-focused program of research so early in my career.”*  
- Dr. Jennifer Runquist, College of Nursing

To date, the project has recruited over half of the proposed pilot project sample and preliminary results are showing that this screening has thus far been successful at reaching a vulnerable maternal population. In addition, LSS is nearly ready to implement a protocol for screening for depression in their Birth to 3 Program. Two grant proposals to advance this work were submitted in late 2007. This project also identified the need to adjust the reading level of the Individualized Family Service Plan for the Birth to 3 Program since it's higher than recommended. An intramural grant has been submitted to address this issue.

---

## Utilizing Tailored Step-Count Feedback To Enhance Physical Activity in the Elderly

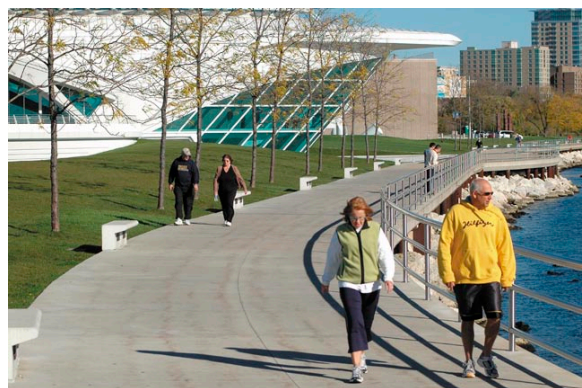
---

Investigator: **Scott J. Strath, PhD, Human Movement Sciences (CHS)**

Collaborators: **Daniel Romanowich, UWM CHS Graduate Student; Veterans Administration's Healthy Aging Clinics; Milwaukee County Department on Aging**

This project develops and tests a program to motivate patients at risk for chronic disease to increase their walking using objectively measured step-count feedback and motivationally matched messaging. The goal is to provide community partners and primary care providers with an effective and practical intervention to help sedentary patients at risk for chronic disease become more active in an attempt to increase the health and well-being of older adults.

Since the start of funding in May 2006, a web-mediated interactive intervention design has been developed and is being tested, a pilot sample has conducted beta testing, and a full randomized control trial has begun.



Milwaukee Lakefront

---

## **Piloting a Community-Based Participatory Research Approach to Investigate the Health Issues and Resource Needs of Latinas Living with HIV**

---

Investigator: **Patricia E. Stevens, PhD, RN, FAAN (CON)**

Collaborators: **Loren Galvão, MD, MPH, Director, Community Partnerships (CUPH) & Associate Scientist, (CON)**

Project Advisory Committee Members: **Roberto Hernandez Center; Milwaukee Health Services, Inc.; Sixteenth Street Community Health Center; Walker's Point Community Clinic; United Migrant Opportunity Services; Latino Health Organization; United Community Center; and La Causa**

The specific aims of this community-based participatory research (CBPR) project are to a) explore the impact of HIV in the lives of HIV-infected women through qualitative interviews (conducted in participants' primary language), and b) integrate the dynamic involvement of a community advisory board throughout all stages including research design, sample recruitment, data collection, translation and analysis, dissemination of results, and generation of policy and practice recommendations.

Dr. Patricia Stevens utilized the Center's infrastructure to hire a full-time highly qualified, bilingual Outreach Specialist, Virginia Zerpa-Uriona, MPH, to coordinate this and other CBPR projects. The project's Community Advisory Board met in December and actively discussed the issues facing HIV-infected Latinas in Milwaukee as well as planning the study design, participant recruitment, data collection, and human subject protections. The individual interviews are now underway.

***“I have been continually impressed by the collaborative efforts of the entire staff of the Center in working with Center Scientists. The Center has hired core research personnel who work with Center Scientists to design and conduct successful studies. The infrastructure of the Center allows for dialogue and capacity building across disciplines and institutions to strengthen urban population health research in Wisconsin.”***

***- Dr. Pat Stevens, College of Nursing***

---

## A Global Information Systems (GIS) Approach to Waterborne Infectious Disease: Cryptosporidium

---

Investigator: **Robert S. Burlage, PhD, Clinical Laboratory Sciences (CHS)**

Collaborators: **Changshan Wu, PhD, Department of Geography (L&S); A. Cogsbell, Student (CHS); Milwaukee Health Department; and Milwaukee River Basin Partnership**

The purpose of this project is to collect oocysts from Milwaukee water sources and analyze them for viability and to collect environmental data to create a unique graphic representation of the data using geographic information systems (GIS) analysis. The resulting map is a critical step in the analysis of the movement of a pathogen through an environmental system and the associated risk assessment that differs markedly from analysis of other communicable diseases.

To date, data sets from several sources are being incorporated into the GIS map, analysis of the oocysts has been finalized, and a provisional patent application has been filed with the UW-Milwaukee Research Foundation: *“Measuring viability in Cryptosporidium oocysts and other pathogens.”* In addition, Dr. Burlage has been listed with the Milwaukee River Basin Partnership as a correspondent and has presented his work at a national conference.



*Robert S. Burlage, PhD, Investigator  
with a student*

***“The importance of the Center, from my perspective, is two-fold. First, they encourage research that is innovative at a time when most funding agencies are putting their money on ‘safe’ but dull research projects. Second, they push you to think in community terms, not just in laboratory terms. This increases your perspective to a societal level, which is often missing in academic projects.”***

***- Dr. Robert Burlage, College of Health Sciences***

# Aurora UW Medical Group Research

The **Aurora UW Medical Group (AUWVG) Research Committee** and **Dr. Dennis Baumgardner** are providing research support (through the Center for Urban Population Health) to approximately 45 AUWVG faculty, resident, and fellow research projects. A few highlights of successful collaborations in 2007 are examined below, and a complete listing of projects is provided immediately following.

---

## *Addressing Healthcare Disparities in an Urban, Academic Clinic*

---

Investigators: **Elizabeth Bade, MD (AUWVG)**; **Jennifer Evertsen, MS (CUPH)**; **Sabrina Smiley (UW MPH Fellow)**; **Dennis Baumgardner, MD (AUWVG/CUPH)**; **Barbara Beck, PhD (MHD/CUPH)**

To address local health disparities, Dr. Bade and colleagues conducted several focus groups that explored the issues surrounding healthcare disparities. The focus groups were conducted with community members in association with Aurora's Family Care Center in downtown Milwaukee.

Common themes identified to address healthcare disparities included simplifying insurance company procedures to aid understanding and reduce frustrations, including transportation costs in covered services, and addressing social issues first.

The research team presented a poster titled *Navigating the Healthcare System: a Minority and Underserved Patient's Perspective* at the UW Population Health Institute's Bi-Annual Conference in November 2007.

In addition to this work, Dr. Bade, through support from the AUWVG Research Committee, is pursuing clinical research topics such as pediatric asthma.



**Elizabeth Bade, MD,**  
Investigator

---

## *TIMES: Telemedicine in Milwaukee Elementary Schools*

---

Investigators: **John Brill, MD, MPH (AUWVG)**; **Victoria Carlson-Oehlers, RN, MS, CPNP(AHC)**; **Teresa Rommelfanger, PNP (AHC)**

Collaborators: **Aurora's School-Based Health Team (AHC)**; **Jessica Bergstrom, MPH (CUPH)**; **Jennifer Evertsen, MS (CUPH)**; **Melissa Lemke, BA (CUPH)**

Consistent with the National Institutes of Health (NIH) focus on research in health disparities and the urban poor and medically underserved, a collaborative effort was initiated in 2007 that aims to improve health outcomes for Milwaukee's youth. The collaboration includes the Milwaukee Public Schools, the Aurora School Nurse program, Dr. John Brill, AUWVG Family Medicine Clerkship Director, and Center staff. This pilot project utilizes the technology of digital cameras and the Internet to provide on-line physician consultation and a diagnosis and prescription for the student without the need for a referral to



an outside facility. In addition to improving health outcomes for the youth of Milwaukee, this project is intended to reduce the amount of time that students miss school due to untreated illness and to lessen the amount of time parents need to miss work to follow up with a referral from a school nurse. The project was initiated in 2007 and preliminary results are expected near the end of 2008.

---

### ***Weight Management for a Defined Employee Population using an Interactive eHealth Portal***

---

**Investigators: Allison Lux, MD (AUWMG); Ron A. Cisler, PhD; Susan Partington, PhD, RD; Andrea Schreiber, MS; and Lea Soderstrom, MA (all CUPH)**

Funded by the Robert Wood Johnson Foundation in 2005, this study was designed to examine the effects of internet-based weight loss tools on the weight and overall health of a group of Aurora Health Care metro-area employees and their families. Half of the participants were given access to the online weight loss tools (experimental group), while the other half did not have access to the tools (control group). Both groups participated in regular biometric assessments and were given information about healthy eating and exercise through paper handouts and a bi-weekly electronic newsletter. By examining the differences between the two groups after 18 months, the study team hoped to measure the effectiveness of the online tools.

At the conclusion of the two-year study, the investigators found no difference between the groups in Body Mass Index (BMI) or other health measures; however, they did find that utilizing online tools proved to be a behavior change in and of itself. The investigators recommended further research on how to best implement a set of online tools.

### **AUWMG Research**

*Factors influencing Hepatitis B vaccine birth dose provision and series completion.* M. Alexander-Young (MPH Fellow); D. Baumgardner, MD.

*Quality Improvement Project for Varicella Immunization in Women of Child-bearing Age.* B. Amuzu, MD; L. Gupta, MD.

*Use of Tea Tree Oil in Skin Infections.* T. Bauer, MD; D. Ames RN, MSN, APNP-BC, CCAP; S. Turner RN, MS.

*Survey of Milwaukee Primary Care Residents and Faculty re: Interest in International Medicine Track.* T. Bauer, MD; J. Evertsen, MS.



Jennifer Evertsen, MS, presents at the Wisconsin Research & Education Network conference

*Outcomes of a central city residency site.* E. Bade, MD; D. Baumgardner, MD; J. Brill, MD.

*Wisconsin Network for Health Research (WiNHR): Azmatics.* Lead Milwaukee P.I. – E. Bade, MD; D. Baumgardner, MD

*Wisconsin Screening, Brief Intervention and Referral to Treatment: Aurora Health Care Site Implementation.* R. Brown, MD (UW Madison); Lead Milwaukee P.I. – E. Bade, MD

*Cost and analysis of usual source of care.* D. Baumgardner, MD; M. Gamez, MD (UW Faculty Development Fellow)

*Epidemiology and Ecology of Blastomyces dermatitidis.* D. Baumgardner, MD

*Geographic clustering of ADHD in children.* D. Baumgardner, MD; A. Schreiber, MA; J. Weimer (UW Student)

*Identification of minimal liquid media for growth of B. dermatitidis in yeast form at 37° C.* D. Baumgardner, MD; E. Benavides, DO

*Periodic fever, aphthous stomatitis, pharyngitis syndrome.* D. Baumgardner, MD; I. Banerjee

*Seasonal geographic distribution of human cases of blastomycosis.* D. Baumgardner, MD; Z. Baesman (MD/MPH Student).

*WiNHR: Angiotension converting enzyme with microalbuminuria.* Milwaukee P.I. - J. Bidwell, MD, MPH; J. Evertsen, MS

*Spanish Language Diabetes Support Group.* J. Bidwell, MD, MPH

*Endoscopy for Barrett's Esophagus.* A. Breitingner, MD (GI Fellow); N. Vakil, MD; D. Baumgardner, MD

*TIMES: Telemedicine in Milwaukee Elementary Schools.* J. Brill, MD, MPH; J. Bergstrom, MPH; M. Lemke, BA

*Urban Blastomycosis.* C. Brummitt, MD; D. Baumgardner, MD; G. Swain, MD, MPH; B. Buggy, MD, J. Meidl, MD, Z. Baeseman (MD/MPH Student); M. Lemke, BA

*Quality Improvement of BP Measurement.* A. Caceres, MD, et al.

*Use of Information Technology for Real-Time Improvement in Care of Seniors in an Outpatient Clinic – 'Healthy Aging Tracker.'* R. Demircioglu, MD

*Use of optical mark recognition technology in medical informatics.* B. Droese, MD

*Patient Reported Motivators for Weight Loss.* T. Dunek, MD (Resident); L. Williams, MD (Resident); Family Medicine Residents and Faculty; D. Baumgardner, MD; S. Simpson, MS; L. Sullivan Vedder, MD

*Diagnosis of pneumonia in primary care.* J. Evertsen, MS; D. Baumgardner, MD; A. Regnery (Medical Student); I. Banerjee

*Quality Improvement Project for Varicella Vaccination.* L. Gupta, MD (Resident); B. Amuzu, MD

*Prevalence and Significance of Changes in Left Ventricular Ejection Fraction during Gated SPECT Myocardial Perfusion Imaging.* B. Haddadian, MD (Resident), S. Port, D. Baumgardner, MD

*Incidence and Predictors of Post-Operative Fevers in Patients Undergoing Hip and Knee Surgery.* J. Halm, MD, R. Racadio, D. Thompson, J. Bergstrom, MPH

*Non-Ischemic Cardiomyopathy, Hypertension and Treatment with Carvedilol are Predictors of Improvement in Left Ventricular Ejection Fraction in Patients with Systolic Dysfunction.* A. Hashim, MD (Resident), S. Simpson, MS

*'A Hospital Prepared for Seniors': Going from Good to Great.* A. Khan, MD; M. Malone, MD; M. Kantar (FM Resident) N. Luma (Geriatrics Fellow)

*Enhanced contrast of food tray for Parkinson's patients.* A. Khan, MD; M. Lemke, BA; C. Henning-Smith, MPH (Fellow)

*Nurses' attitudes toward patients with delirium.* A. Khan, MD; M. Lemke, BA

*Quality Improvement Project: Normoglycemia in Older vs. Young Patients with Hip and Knee Arthroplasty at ASMC and Hypoglycemia with Intensive Glucose Management in Older Adults on Intensive Glucose Management.* A. Khan, MD; M. Malone, MD; et al.

*Assessing the Incidence of Chlamydia in Asymptomatic Men Presenting to an Urban Family Practice Clinic: Is Screening Cost Effective?* Funded by the Wisconsin Academy of Family Physicians. A. Lux, MD; J. Evertsen, MS; et al

*The Health Care Task Force on Pre- and Inter-Conception Care: Optimizing Women's Health and Increasing Access to Primary and Preventive Health Services.* T. Mason, MD, MPH; J. Bergstrom, MPH; L. Galvão, MD, MPH; et al.

*WiNHR: Possible Complications of Infections with Mycoplasmas During Pregnancy.* T. Mason, MD, MPH; J. Tillett, CNM, ND; D. Baumgardner, MD; J. Evertsen, MS

*Survey of willingness for an alternative vaginitis treatment.* B. Moss, MD (Resident); D. Baumgardner, MD

*Biochemical Progression-Free Survival in Early-State Prostate Cancer Treated with Permanent Brachytherapy.* S. Offerman, MD (Resident), J. Evertsen, MS; et al.

*Improving Evaluation of Fetal Demise.* P. Pilla, MD (Resident); B. Amuzu, MD

*Intrauterine Growth Restriction at Aurora Sinai Medical Center.* K. Powell Mattioli, MD (Resident); S. Chauhan, MD

*Prevention and early detection of Chemotherapy induced Cardiomyopathy with the use of Carvedilol.* S. Qamar, MD (Resident); A. Gupta, MD

*Increasing Breastfeeding Rates in Milwaukee County.* K. Reynolds, MD

*BNP values in patients with CHF due to diastolic dysfunction.* L. Schmitz, MD (Resident); D. Baumgardner, MD

*Aroma Therapy Brief Trial.* B. Schultz. FNP

*Filshce vs. Clip and Pomeroy Method for Obstetric Sterilization.* D. Siddiqui, MD, S. Partington, PhD, A. Al-Niामी, MD (Resident)

*WiNHR: Pilot Study to Implement a Coumadin/Warfarin Dosing Calculator.* M. Tector, PhD; J. Evertsen, MS; M. Lemke, BA

*WiNHR: Study to Determine the Feasibility of Modeling Stable Warfarin Dose in Persons of African American Race/Ethnicity.* M. Tector, PhD; J. Evertsen, MS; M. Lemke, BA

*Safe Mom, Safe Baby: Collaborative Model of Care for Pregnant Women Experiencing Intimate Partner Violence.* J. Tillett, CNM, ND; A. Kramer, MS, RN, CEN; J. Bergstrom, MPH; M. Lemke, BA; et al.

*Expanding and Sustaining the "Safe Mom, Safe Baby" Project.* J. Tillett, CNM, ND; T. Mason, MD, MPH; J. Bergstrom, MPH; M. Lemke, BA; et al.

*Group Prenatal Care for Vulnerable Pregnant Teens: Building Self-Efficacy and Social Support.* J. Tillett, CNM, ND; J. Bergstrom, MPH; M. Lemke, BA; et al.

*Asymptomatic infection or carriage of B. dermatitidis by dogs in Northern Wisconsin.* N. Varani (UW School of Veterinary Medicine Student), C. Czuprynski, PhD, D. Baumgardner, MD

*Improving Breastfeeding Rates at Aurora Sinai Family Care Center.* L. Williams, MD (Resident); D. Baumgardner, MD; ASFCC Faculty

*A Qualitative Review of Partners of Prostate Cancer Patients: Beliefs, Experiences, and Partners' Outcomes.* A. Wolkenstein, MSW; J. Evertsen, MS

---

## University of Wisconsin's Institute for Clinical and Translational Research

---

*In 2007, the University of Wisconsin's Institute for Clinical and Translational Research (UW-ICTR) received a National Institutes of Health Clinical and Translational Science Award for \$41 million over five years. As part of the award, UW-ICTR committed to expanding its resources across the State of Wisconsin. One method ICTR identified was to extend its resource network through Aurora Health Care and the Center. The Center has been working with ICTR researchers to implement several of these commitments.*

---

### Wisconsin Alzheimer's Institute

---

An important collaboration was established in 2007 with the **Wisconsin Alzheimer's Institute** (WAI) under the leadership of Dr. Mark Sager. The Wisconsin Registry for Alzheimer's Prevention (WRAP) project aims to study the adult children of individuals who are diagnosed with Alzheimer's disease. In a model collaboration, the successful Madison-based WRAP project has partnered with the Center to expand its reach and initiate a Milwaukee site. WRAP has successfully leveraged various funding sources to ramp up the human resource capacity of its work in Milwaukee. In partnering with the Center, WRAP was able to plug into the human, physical and technologic capacities of the Center as well as benefit from the Center's community connectedness.

Approximately 4.5 million Americans suffer from Alzheimer's disease. Alzheimer's not only robs individuals of cognition, memory and language, but it also exposes family and friends who serve as caregivers to considerable emotional, physical and financial stress. Age has been identified as the biggest risk factor for this disease. With an aging population and without any effective interventions, it is estimated that the prevalence of Alzheimer's could triple as early as 2050. The need for researchers to study early stages of the disease process and discover prevention strategies has never been greater.

---

### Childhood Asthma Research and Education (CARE) Network

---

Another collaboration that began in 2007 was with UW Madison Drs. Robert Lemanske and Christine Sorkness to develop a satellite site for the nationwide **Childhood Asthma Research and Education (CARE) Network**. Dr. Liz Bade, the Milwaukee-based Principal Investigator, is leading an effort to establish the satellite site. Recruitment for the protocol, "Treating Exacerbations of Asthma" (TREXA), is expected to begin in spring 2008.

---

## Wisconsin Network for Health Research

---

In 2007, the **Wisconsin Network for Health Research (WiNHR)**, a network of health services researchers from the Center, Aurora Health Care, UW Hospitals and Clinics, Marshfield Clinic Research Foundation, and Gundersen Lutheran, received additional funding from the Wisconsin Partnership Fund to continue its work. WiNHR's major accomplishments in 2007 included implementing a data management system for WiNHR studies, setting up an online review process for prospective studies, and collaborating with Wisconsin's very newly formed Institutional Review Board Consortium (IRBC), which is a group of Institutional Review Boards working together to streamline review and oversight of multi-site research in Wisconsin. In addition, the Center successfully recruited almost all of its expected cohorts for the *Study to Determine Feasibility of Modeling Stable Warfarin Dose in Persons of African American Race*, and the *Pilot Study to Implement a Warfarin Dosing Calculator*. Both studies are led locally by Matthew Tector, PhD, of Aurora Health Care.



---

## Survey of the Health of Wisconsin (SHOW)

---



Salwa Massad, Claudia Pereira, Sara Kazmierczak,  
Loren Galvao, and David Frazer

The **Survey of the Health of Wisconsin (SHOW)** is an observational, prospective study in the State of Wisconsin that will conduct in-person interviews, take health measurements, and collect biological samples from a random and representative sample of residents of Wisconsin. All of the information and samples will be compiled into a databank for future research. SHOW's Milwaukee Survey Center opened an office in December in the Physician Office Building of Aurora Sinai Medical Center to easily accommodate Milwaukee area participants.

SHOW is moving steadily toward its launch into field operation. In early 2008, SHOW will be knocking at doors all around the state, administering the country's first statewide health survey of its kind. SHOW recently hired nine field staffers - SHOW's important frontline. They will recruit selected participants, administer SHOW's

health interviews, and perform health measurements at survey centers. The team completed a rigorous 12-week training schedule during which they became certified in the many different instruments that SHOW will utilize.

Dr. Loren Galvão, Associate Director for Community Partnerships at the Center, serves as Associate Director for the SHOW Milwaukee study site. She is advising the SHOW field team in Milwaukee, collaborating with the SHOW Principal Investigator, Javier Nieto, PhD, and key staff in overall project direction, and identifying, prioritizing and designing additional SHOW ancillary studies.

In the fall of 2007, Dr. Galvão, in partnership with Ella Dunbar and the Social Development Commission, began writing a National Institute of Health Community Partners in Research proposal. The proposal, if funded, will pilot a project to mobilize and fully engage the African American community in the annual conduct of SHOW and in the implementation of health-promoting interventions and policy changes based on its findings. The proposal is slated for an early January 2008 submission.



# Training and Professional Development

The Center's third strategic goal is: *Creating opportunities to advance population health education, training and professional development activities.* Practicum, service learning and research experiences are central to training public health professionals and a core component of the Center's strategic objectives. The Center currently engages in student applied research and plans to further expand these initiatives in collaboration with the University of Wisconsin-Milwaukee's developing School of Public Health. The Center's Data Warehouse, as it is more fully developed, will add a rich resource for students' theses, dissertations, and research experiences. The Center facilitated a number of growth opportunities in 2007.



Zachary Baeseman, a UW MD/ MPH student presents his research at the Wisconsin Research & Education Network conference.

## City of Milwaukee Health Department (MHD) Collaboration

The Center's strategic partnership with the MHD is multifaceted and includes both programmatic initiatives and cooperative leadership positions. In addition, the Center works with the MHD to facilitate an academic learning environment. The Center is collaborating with Barbara Beck, PhD, UWSMPH Associate Faculty Associate, who serves as the MHD's Public Health Education and Training Coordinator, and Geof Swain, MD, MPH, Medical Director for the MHD, Center Scientist, and Associate Professor, Department of Family Medicine, UWSMPH. In these roles (which are partially funded by the Center), Drs. Beck and Swain support service learning opportunities for public health fellows and students placed at the MHD and the Center. The Center and the MHD provided the following service learning opportunities for MPH students in 2007.

### *Master of Public Health Fellow Paid Service Learning Opportunity in Community-Based Research*

Sabrina Smiley gained experience in conducting focus groups as part of the *Navigating the healthcare system: a minority and underserved patient's perspective* project, including acting as co-author on the poster presented at the UW Population Health Institute's conference. S. Smiley, L. Bade, J. Evertsen.

*Master of Public Health Fellowship Experience in Geriatric Care.* Carrie Henning-Smith is collaborating on a quality improvement project for Parkinson's patients. C. Henning-Smith, A. Kahn, B. Beck, D. Baumgardner.

*Master of Public Health Internship – "Milwaukee Health Rankings."* Peter Vila received mentoring and resources in identifying Milwaukee data points, and authoring a paper: Vila, P., Swain, G., Baumgardner, D., Halsmer, S., Remington, P., Cisler, R. (2007). Health Disparities in Milwaukee by Socioeconomic Status. *Wisconsin Medical Journal*. 106(7):366-372.

*Master of Public Health Summer Internship on Blastomycosis.* Zachary Baeseman gained experience in analyzing the geographic distribution of human blastomycosis in Northern Wisconsin. Z. Baeseman, D. Baumgardner, M. Lemke.

*Master of Public Health Summer Internship on Women's Health.* Anne Huber, a UW-Madison MD/MPH Intern, gained population health research experience in domestic violence prevention during pregnancy and also gained experience in pre- and inter-conception care issues. A. Huber, J. Bergstrom, B. Beck.

*Statistical Support for a Master of Public Health Fellow.* Morgan Alexander-Young received statistical support for a project looking at hospital factors determining the completion of infant primary HBV vaccinations. M. Alexander-Young, D. Baumgardner.

## The Center provided several additional service learning opportunities:

**Clinical Clerkship in Rural and Community Health.** The Center partners with AUWWMG to offer a one-month immersion experience in urban community health for fourth-year UWSMPH students. In 2007, seven students participated in the clerkship. 7/07 & 12/07. J. Stearns, J. Brill, A.M. Talsky.

**Clinical Research Internship.** The Center provided clinical research experience to Jonathan Weimer, a UW pre-med student, on a project investigating geographic clustering of ADHD in children. Weimer applied for and received a UW Department of Family Medicine grant of \$2,029 to support his work. 11/06 – 5/07. J. Weimer, D. Baumgardner, A. Schreiber.

**Clinical Research Mentorship.** Aurora Health Care's Clinical Research Department provided clinical research training and mentoring to an INROADS undergraduate intern and a new employee of the Center. 5/07 – 6/07. C. Rausch, J. Evertsen, M. Lemke, I. Banerjee.

**Information Technology Paid Student Internship.** Simeona Todorova, a UW-Milwaukee undergraduate student, gained experience and provided support to the Information Technology core of the Center. Upon graduation, she accepted a position at the Center as a Web Application Developer. 5/07 – 12/07. S. Todorova, D. Steber, A. Marek.

**Information Technology Paid Student Internship.** Jamie Ennis, a UW-Milwaukee undergraduate student, gained experience and provided support to the Information Technology core of the Center. Upon graduation, she accepted a position at Northwestern Mutual as a Programmer/Business Analyst. 5/06 – 5/07. J. Ennis, D. Steber, A. Marek.

**INROADS Summer Research Internship.** The mission of UW-Milwaukee's INROADS is to develop and place talented minority youth

in business and industry and prepare them for corporate and community leadership. At the Center, Indran Banerjee, an undergraduate student intern, gained clinical research experience in the area of pneumonia diagnosis. 5/07 – 8/07. I. Banerjee, D. Baumgardner, J. Evertsen.

**Paid Research Assistantship.** Maggie Evans, UW-Milwaukee graduate student, gained experience in clinical and health services research and supported WiNHR and AUWWMG projects. 4/07 – 12/07. M. Evans, J. Evertsen, T. Salm Ward.

**Paid Research Assistantship.** Shannon Simpson, UW-Milwaukee graduate student, gained experience in clinical and health services research and supported WiNHR and AUWWMG projects. In addition, the Center provided career mentoring in the area of clinical research. Upon graduation, she accepted a Clinical Coordinator position at a clinical research company out of state. 10/6 – 2/07. S. Simpson, J. Evertsen, T. Salm Ward.

**Project Database Paid Internship.** Adam Mucci, a UW-Milwaukee undergraduate student, developed a database to track Center projects and initiatives. 10/07 - 12/07. A. Mucci, A. Marek, T. Salm Ward.

**UW-Milwaukee Health Care Administration Internship.** Ronald Lawson, Jr., an undergraduate UW-Milwaukee student, gained administration and management experience at the Center. In addition, Center staff facilitated his meeting and talking with a successful Aurora administrative leader. 2/07 - 5/07. R. Lawson, T. Salm Ward, L. Banfi.

**UW-Madison Department of Family Medicine's Summer Research and Clinical Assistantship Program.** Ann Regnery, a first year medical student, gained experience in clinical research in the area of pneumonia diagnosis. 5/07 – 7/07. A. Regnery, D. Baumgardner, J. Evertsen.



# Human Capacity

The Center has continued to make progress on its fourth strategic goal: *Developing internal infrastructure including information technology, research design and analysis, and communication and business operations.*

## Executive Committee

The Center's *Executive Committee* provides oversight and guidance on the Center's mission and goals. The Executive Committee is made up of representatives from each of the Center's collaborating institutions as well as representatives from key community organizations.

### Members

**Patricia Arredondo, EdD**

Associate Vice Chancellor for Academic Affairs and  
Professor, Educational Psychology  
University of Wisconsin–Milwaukee

**Bevan Baker, CHE**

Commissioner  
Milwaukee Health Department

**Deborah Blanks, CCAP**

Chief Executive Officer  
Social Development Commission

**Maureen Durkin, PhD**

Associate Professor  
UW School of Medicine and Public Health

**Patrick Falvey, PhD**

Senior Vice President and Chief Integration Officer  
Aurora Health Care

**Randall Lambrecht, PhD (Chair)**

Dean, College of Health Sciences  
University of Wisconsin–Milwaukee

**Sally Lundeen, PhD, RN**

Dean, College of Nursing  
University of Wisconsin–Milwaukee

**Jeffrey Stearns, MD**

Medical Director for Medical Education  
Aurora UW Medical Group

### Ex Officio

**Ron Cisler, PhD**

Director, Center for Urban Population Health  
Associate Professor  
University of Wisconsin–Milwaukee/UW School of  
Medicine and Public Health

**Bruce Van Cleave, MD**

Senior Vice President and Chief Medical Officer  
Aurora Health Care

## Core Faculty and Staff

**The leadership structure** of the Center is unique in that it employs a Director and Associate Directors who also maintain administrative and/or academic affiliations and responsibilities. The Center's directorship strategically develops the Center's population health activities while maintaining a strong connectedness with the University of Wisconsin–Milwaukee, the University of Wisconsin School of Medicine and Public Health, and Aurora Health Care. These connections allow the Center's leadership to bring a broad perspective to the table when guiding the Center.

**Ron A. Cisler, PhD, *Director*.** In addition to strategic planning and leadership of the Center, Dr. Cisler also serves an academic role as an Associate Professor of Health Sciences at the University of Wisconsin–Milwaukee and an Associate Professor of Population Health Sciences at the University of Wisconsin School of Medicine and Public Health.

**Dennis Baumgardner, MD, *Associate Director for Health Services Initiatives*,** also provides academic and administrative leadership for the Aurora UW Medical Group, and serves as a Professor of Family Medicine at the University of Wisconsin School of Medicine and Public Health.

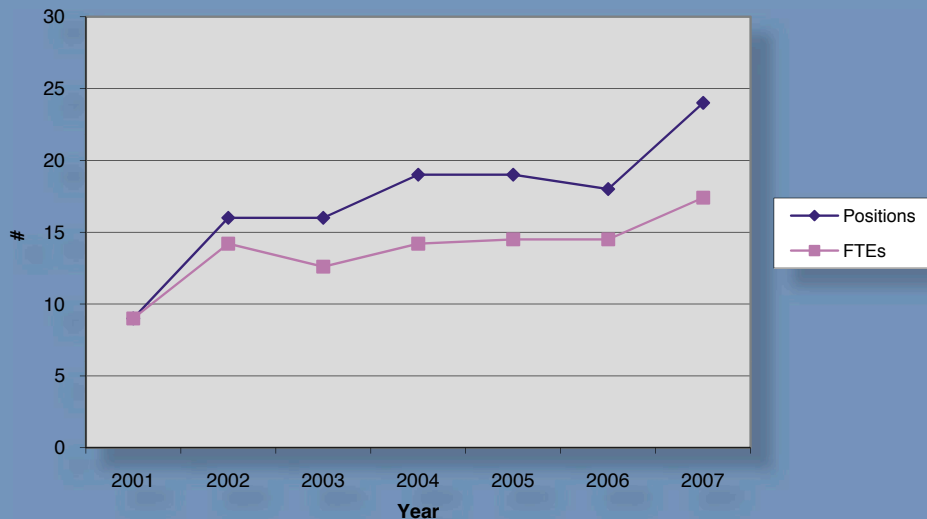
**Loren Galvão, MD, MPH, *Associate Director for Community Partnerships*,** also serves in an academic role as an Associate Scientist at the University of Wisconsin–Milwaukee College of Nursing's Center for Cultural Diversity and Global Health, and as an Honorary Fellow at the Department of Population Health Sciences at the University of Wisconsin School of Medicine and Public Health.

### Center Staff Include:

Marilyn Anderson, ASB  
Lee Banfi, MBA, CPA, FHFMA  
Barbra Beck, PhD  
Jessica Bergstrom, MPH  
Karen Blanchard  
Robert Cherry, Jr., BS  
Jennifer Everts, MS  
David Frazer, MPH  
Floyd Frost, PhD  
Gina Green-Harris, MBA  
Rebecca Hamilton, BS  
Meredith Keller, BA  
Melissa Lemke, BA  
Andrew Marek, BBA  
Katie Pronschinske, BS, MT (ASCP)  
Trina Salm Ward, MSW, CCRC  
Andrea Schreiber, MA  
Dale Steber, MS  
Geoffrey Swain, MD, MPH  
Anne Marie Talsky, BA  
Simeona Todorova, BA  
Virginia Zerpa-Uriona, MPH

*Administrative Assistant*  
*Business Services Manager*  
*Public Health Education and Training Coordinator*  
*Associate Researcher*  
*Senior Administrative Assistant*  
*Outreach Specialist*  
*Assistant Researcher*  
*Coordinator of Community Based Initiatives*  
*Scientist*  
*Outreach Specialist*  
*Associate Research Specialist*  
*Research Program Manager I*  
*Associate Research Specialist*  
*Senior Web Application Developer*  
*Practice Enhancement and Education Assistant*  
*Research Program Manager II*  
*Assistant Researcher*  
*Supervisor of Information Technology*  
*Center Scientist*  
*Senior Administrative Assistant*  
*Web Application Developer*  
*Outreach Specialist*

## Center for Urban Population Health Growth in Personnel



## Center Scientists and Affiliates with Active Projects in 2007

Betty Amuzu, MD, *Aurora UW Medical Group*

Laura Anderko, PhD, RN, *UW-Milwaukee College of Nursing*

Elizabeth Bade, MD, *Aurora UW Medical Group*

Howard Bailey, MD, *UW Comprehensive Cancer Center*

Kris Barnekow, PhD, OTR, *UW-Milwaukee College of Health Sciences*

Terese Bauer, MD, *Aurora UW Medical Group*

Dennis Baumgardner, MD, *Aurora UW Medical Group*

Barbra Beck, PhD, *UW School of Medicine and Public Health, Milwaukee Health Department*

Jake Bidwell, MD, *Aurora UW Medical Group*

Deborah Blanks, MS, *Social Development Commission*

Kathy Blair, BSN, MS, *Milwaukee Health Department*

John Brill, MD, MPH, *Aurora UW Medical Group*

Maebe Brown, MS, *National Cancer Institute's Cancer Information Services, Milwaukee Regional Cancer Care Network*

Robert Burlage, PhD, *UW-Milwaukee College of Health Sciences*

Bruce Campbell, MD, *Medical College of Wisconsin, Milwaukee Regional Cancer Care Network*

Susan Cashin, PhD, *UW-Milwaukee College of Health*

### Sciences

Ron A. Cisler, PhD, *UW-Milwaukee/UW School of Medicine and Public Health*

Ann Conway, RN, MS, MPA, *Wisconsin Association of Perinatal Care*

Reyhan Demircioglu, MD, *Aurora UW Medical Group*

Ella Dunbar, MS, *Social Development Commission*

Maureen Durkin, PhD, *UW School of Medicine and Public Health*

Janice Eells, PhD, *UW-Milwaukee College of Health Sciences*

Michael Fiore, MD, MPH, *UW Center for Tobacco Research and Intervention*

Floyd Frost, PhD, *Aurora Health Care*

Loren Galvão, MD, MPH, *UW-Milwaukee College of Nursing*

Robert Goldstein, *Prevent Blindness Wisconsin*

Mark Huber, *Aurora Health Care*

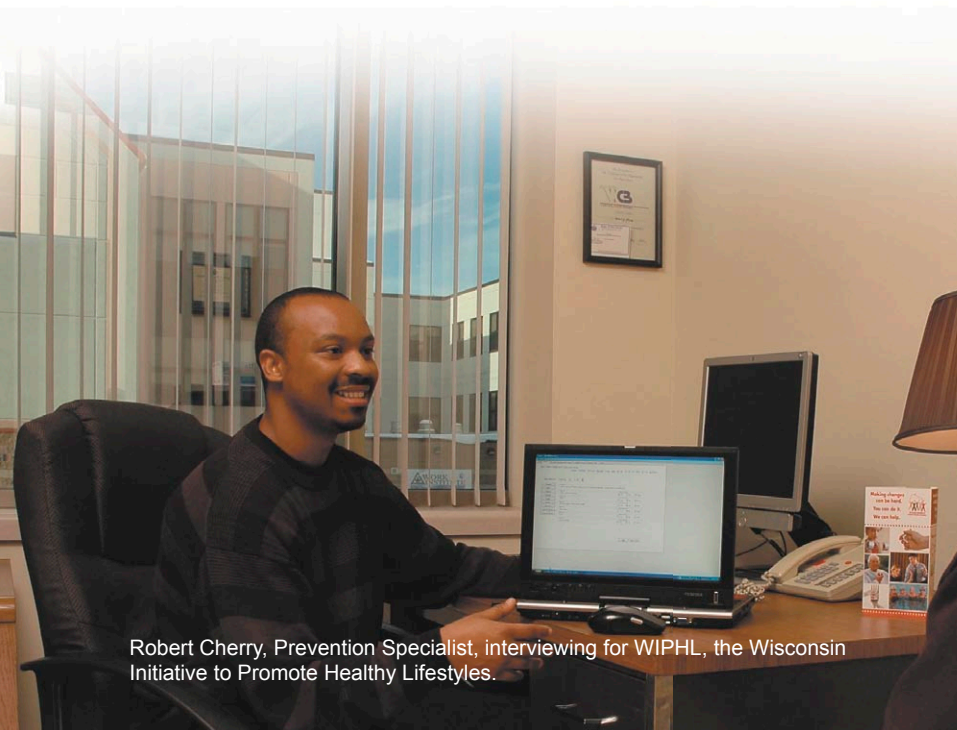
Teresa Johnson, PhD, RN, *UW-Milwaukee College of Nursing*

Ariba Kahn, MD, *Aurora UW Medical Group*

Rhonda Kowalchuk, PhD, *Southern Illinois University*

Alice Kramer, MS, RN, CEN, *Aurora Health Care*  
Randall Lambrecht, PhD, *UW-Milwaukee College of Health Sciences*  
Tina Mason, MD, MPH, *Aurora UW Medical Group*  
Mary Kay Madsen, PhD, RN, FAAMR, *UW-Milwaukee College of Health Sciences*  
Michael Malone, MD, *Aurora UW Medical Group*  
Sandra Milon Underwood, PhD, RN, FAAN, *UW-Milwaukee College of Nursing, Milwaukee Regional Cancer Care Network*  
Kathleen Murphy, RN, MSN, APRN-BC, *Milwaukee Public Schools*  
F. Javier Nieto, MD, PhD, *UW School of Medicine and Public Health*  
Mallory O' Brien, PhD, *Harvard University, Milwaukee Police Department*  
Timothy Patrick, PhD, *UW-Milwaukee College of Health Sciences*  
Susan Partington, PhD, RD, *UW-Milwaukee College of Health Sciences*  
Hannah Pichiottino, MA, *Prevent Blindness Wisconsin*  
Sarah Ray, RPh, *Aurora Health Care*  
Kristen Reynolds, MD, *Aurora UW Medical Group*

Paula Rhyner, PhD, *UW-Milwaukee College of Health Sciences*  
Jennifer Runquist, PhD, RN, *UW-Milwaukee College of Nursing*  
Stephen Saunders, PhD, *Marquette University*  
Patricia E. Stevens, PhD, RN, FAAN, *UW-Milwaukee College of Nursing*  
Scott Strath, PhD, *UW-Milwaukee College of Health Sciences*  
Geoffrey Swain, MD, MPH, *UW School of Medicine and Public Health, Milwaukee Health Department*  
Lora Taylor de Oliveira, MBA, MPH, RD, *UW-Milwaukee Partnerships for Healthy Milwaukee*  
Matthew Tector, PhD, *Aurora Health Care*  
Jackie Tillet, CNM, ND *Aurora UW Medical Group*  
Sally Turner, RN, MS, *Aurora Health Care*  
Marianne Weiss, DNSc, RN, *Marquette University*  
Changshan Wu, PhD, *UW-Milwaukee Department of Geography*



Robert Cherry, Prevention Specialist, interviewing for WIPHL, the Wisconsin Initiative to Promote Healthy Lifestyles.

*Since its inception in 2001, the Center has dramatically broadened its human capacity through the addition of many talented staff.*

## New Staff

In 2007 the Center welcomed several talented staff:



**Floyd Frost, PhD**, Center Scientist, Aurora Health Care

Dr. Frost is an epidemiologist whose objectives are to 1) enhance the research capabilities of Aurora Health Care, 2) continue his research on statin therapy, 3) identify unanticipated benefits and risks of approved medications and therapies, and 4) make better use of existing health care data.



**David Frazer, MPH**, Coordinator of Community-Based Initiatives, UW School of Medicine and Public Health

Mr. Frazer is leading the expansion and sustainment of community partnerships and coordinating community-based research and initiatives. He facilitates collaborative, equitable involvement of the community in local research and is the link between the community and the Center.



**Rebecca Hamilton, BS**, Associate Research Specialist, UW School of Medicine and Public Health

Ms. Hamilton provides laboratory support to the Center by performing DNA extraction and sample processing and analysis. She also works with institutional review boards, enrolls subjects in research projects, and assists with project implementation.



**Meredith Keller, BA**, Research Program Manager, UW School of Medicine and Public Health

Ms. Keller provides local program coordination for the Wisconsin Registry for Alzheimer's Prevention (WRAP), which includes the Milwaukee regional research efforts for the Wisconsin Alzheimer's Institute. In addition, she manages the Healthy Aging program initiative at the Center.



**Melissa Lemke, BA**, Associate Research Specialist, UW School of Medicine and Public Health

Ms. Lemke works with institutional review boards, enrolls subjects in research projects, and implements clinical research studies. She also supports the Center in survey development, data analysis, and geographic information systems (GIS) analysis.



**Katherine Pronschinske, BS, MT (ASCP)**, Practice Enhancement and Education Assistant, UW School of Medicine and Public Health

Ms. Pronschinske coordinates ongoing quality improvement (QI) and research initiatives at participating Wisconsin Research and Education Network (WREN) clinics throughout Southeastern Wisconsin. She serves as a consultant, meeting with practice staff and clinicians to facilitate the research and QI process, identify problems, and share best practices.



**Simeona Todorova, BBA**, Associate Web Applications Developer, Aurora Health Care

Ms. Todorova designs, codes, and tests software applications for the Center. She recently completed a successful internship at the Center and has now joined the Information Technology team as a full-time staff member.



**Virginia Zerpa-Uriona, MPH**, Community-Based Research Outreach Specialist, UW-Milwaukee

Ms. Zerpa-Uriona coordinates and implements community-based research projects, community-based interventions, evaluations and dissemination of findings with a primary focus on Latino health in Milwaukee.

## Midwest AIDS Training and Education Center

In 2007, the Center partnered with the Midwest AIDS Training and Education Center (MATEC) to provide program support and is currently hiring a full time Outreach Specialist for Milwaukee and Southeastern Wisconsin activities. The Center leveraged MATEC's contribution in order to hire this full time position. Located at the Center, the specialist will expand and enhance clinic and community-based organization relationships and share other Center responsibilities.

### Other Staff News

**Jessica Bergstrom, MPH**, accepted a promotion to Associate Researcher. In her new role, Ms. Bergstrom will lead the Center's Design and Analysis Infrastructure Core and will further collaborate with community partners to meet their research, evaluation, and outcome analysis needs.

**Andrew Marek, BBA**, was promoted to Senior Web Applications Developer. In addition to his web developing responsibilities, his new role also includes supervising employees involved in student and service-learning projects.

**Susan Partington, PhD**, joined the University of Wisconsin–Milwaukee College of Health Sciences as an Assistant Professor.

**Andrea Schreiber, MA**, was promoted to Assistant Researcher at the Center. Her primary responsibilities include conducting GIS and data analysis.

**Shannon A. Simpson, MS**, worked as a Clinical Research Assistant at the Center. As a result of the clinical research experience at the Center and mentoring by Center staff, she took a position at a clinical research center in Gaithersburg, MD.

In addition, under the supervision of Dr. Ron A. Cisler, her faculty advisor, she successfully defended her thesis titled "Optimal Vaginal Specimen Collection for Detecting Vaginitis." In August 2007, Ms. Simpson received her Master of Science Degree in Clinical Laboratory Sciences from the University of Wisconsin–Milwaukee Department of Health Sciences.

# Technical Capacity

Aligned with its mission and vision, the Center strives to be the destination for innovative, community-connected and translational urban population health research and education. The Center has been building the capacity to provide researchers, policy makers, community change agents and others with technical expertise that includes:

## Community Partnerships

- Community-academic partnerships
- Community-based participatory research methods
- Community-based research
- Community resource committees

## Health Services Initiatives

- Clinical research protocol development
- Multi-site study coordination
- Study implementation
- Laboratory assistance
- Institutional Review Board submission and reporting, including multi-institutional protocols

## Education

- Faculty development and support in population health research
- Population health research training for residents, fellows and students
- Service-learning opportunities in Information Technology, administration, and research

## Information Technology

- Web application development
- Database development and maintenance
- New technology development
- Needs assessments
- Secure storage of sensitive data

## Communications/Dissemination

- Sharing of research results with the community
- Publication of primary research results for peer review
- Public relations

## Design and Data Analysis

- Qualitative methods (e.g. focus groups, interviews)
- Quantitative methods (epidemiology, biostatistics)
- Geographic Information Systems (GIS)
- Scannable survey data collection (Teleform)
- Survey research methods and design, including web-based surveys
- Project coordination
- Data management
- Data access to local and national data sets
- Program process and outcomes evaluation

## Administration and Operations

- Project management
- Collaborative fund development
- Contracts and agreements
- Pre-award grant process (including budget development)
- Multi-institutional collaborations/agreements
- Business associate/affiliate agreements

# Knowledge Capacity

Dissemination is a key component of research and can have a great impact on the academic community as well as the community at large. Center staff and affiliates disseminated their research through the following publications and presentations in 2007.

## Publications

Vila, P.M., **Swain, G.R., Baumgardner, D.J.,** Halsmer, S.E., Remington, P.L., **Cisler, R.A.** (2007), Health Disparities in Milwaukee by Socioeconomic Status. *Wisconsin Medical Journal*. 106(7):366-72.

Blondin, N., **Baumgardner, D.J.,** Moore, G.E., Glickman, L.T. (2007), Blastomycosis in Indoor Cats: Suburban Chicago, IL, USA. *Mycopathologia*. 163:59-66.

Buckman, J. F., Bates, M.E., & **Cisler, R. A.** (2007). Social networks and their influence on drinking behaviors: Differences in cognitively impaired and unimpaired clients who seek treatment. *Journal of Studies on Alcohol and Drugs*, 68(5):738-747.

O'Brien, M., Woods, L., & **Cisler, R. A.** (2007). The Milwaukee Homicide Review Commission: An interagency collaborative process to reduce homicide. *Wisconsin Medical Journal*, 106(7):385-389.

Vila, P. M., **Swain, G. R., Baumgardner, D. J.,** Halsmer, S. E., & Remington, P. L., & **Cisler, R. A.** (2007). Health disparities in Milwaukee by socioeconomic status. *Wisconsin Medical Journal*, 106(7):366-372.

Stevens, P.E. & **Galvão, L.W.** (2007). "He won't use condoms": HIV-infected women's struggles in serodiscordant primary partnerships. *American Journal of Public Health*, 97:1015-1022.

Chen, M., Macaluso, M., Blackwell, R., **Galvão, L.,** Kulczycki, A., Diaz, J., Jamieson, D., Duerr, A. (2007). Self-

reported mechanical problems during condom use and semen exposure: comparison of two randomized trials in the United States of America and Brazil. Published online ahead of print 5 April 2007. *Sexually Transmitted Diseases*, 34(8):557-62.

**Patrick, T.B.,** Craven, C.K., Folk, L.C. (2007) Report on the 2004 Lindberg Fellowship: Evidence-Based Information Retrieval in Bioinformatics. *Journal of the Medical Library Association*. January; 95(1): e21 - e24 (included as part of "Proceedings of the 106th annual meeting of the Medical Library Association," by Frances H. Lynch and Judith L. Rieke.)

## Presentations

**Baumgardner, D.J.,** Baeseman, Z, **Schreiber A.** (2007) Geographic Distribution of Human Blastomycosis by Season: Northern Wisconsin. *Wisconsin Research and Education Network*, Wisconsin Dells, WI.

**Baumgardner, D.J., Evertsen, J.** (2007) Center for Urban Population Health – A UWSMPH, UWM, Aurora Partnership Working Together to Improve the Health of Communities. *Wisconsin Research and Education Network*, Wisconsin Dells, WI.

Dunek, T., **Baumgardner, D.J.** (2007) Weight Loss: Perceptions and Self-Motivators in Family Medicine Patients, *Wisconsin Research and Education Network*, Wisconsin Dells, WI.

**Evertsen, J., Baumgardner, D.J.** (2007) Pneumonia, Bronchitis, & URI: Diagnosis and



Antibiotic Use in Primary Care Practices, *Wisconsin Research and Education Network*, Wisconsin Dells, WI.

**Bergstrom, J.**, Murphy, M.K., **Partington, S.**, **Galvão, L.**, **Cisler, R.**, Fayram, E., Lundeen, S., Lucey, P. (2007) A multi-method assessment of the health of 1st and 4th graders in Milwaukee Public Schools: The results of the Health Information Improvement Project. Poster Presentation. *Wisconsin Public Health Association Annual Meeting*, Appleton, WI, May.

Murphy, M.K., **Bergstrom, J.**, **Partington, S.**, **Galvão, L.**, **Cisler, R.**, Fayram, E., Lundeen, S., Lucey, P. (2007) A multi-method assessment of the health of 1st and 4th graders in Milwaukee Public Schools: The results of the Health Information Improvement Project. Poster Presentation. *National Association of School Nurses Annual Meeting*, Washington DC, June/July.

**Bergstrom, J. P.**, **Partington, S.**, **Galvão, L. W.**, Murphy, M. K., Fayram, E., & **Cisler, R. A.** (2007). "Excuse me teacher – what does health mean?": Use of a self-reported health tool to measure the health of urban 1<sup>st</sup> and 4<sup>th</sup> graders. *135<sup>th</sup> Annual Meeting of the American Public Health Association*, Abstract #155309, Washington, DC November 6.

**Galvão, L. W.**, **Bergstrom, J. P.**, Murphy, M. K., Fayram, E., Lundeen, S., Lucey, P., & **Cisler, R. A.** (2007). Fostering an academic-school district partnership to improve school health information, planning and decision-making. *135<sup>th</sup> Annual Meeting of the American Public Health Association*, Washington, DC, November.

**Partington, S.**, **Schreiber, A.**, **Soderstrom, L.** et al., **Cisler, R. A.** (2007). Prevalence of overweight and elevated blood pressure among low-income Milwaukee school children and its association with neighborhood disadvantage. *135<sup>th</sup> Annual Meeting of the American Public Health*

*Association*, Washington, DC, November.

**Swain, G.R.**, Vila, P.M., **Baumgardner, D.J.**, Halsmer, S.E., Remington, P.L., **Cisler, R.A.** (2007) Health Disparities in Milwaukee by Socioeconomic Status. Poster Presentation, *UW Population Health Institute Biennial Conference: Improving Wisconsin's Health*, Waukesha WI, November.

Vila, P.M., **Swain, G.R.**, **Baumgardner, D.J.** & **Cisler, R.A.** (2007) Health Disparities in Milwaukee by Socioeconomic Status. Wisconsin Public Health Association Annual Meeting, Appleton WI, May.

Vila, P., **Swain, G.**, **Baumgardner, D.J.**, **Cisler, R.A.**, & Halsmer, S. (2007) Health Outcomes and Health Determinants: Differences Among Disparate Socioeconomic Levels in Milwaukee. Aurora Scientific Day, Milwaukee, WI, May.

**Evertsen, J.**, "Emergency Preparedness, the Community Perspective." Poster Presentation. *Wisconsin Public Health Association*, Appleton, WI, May.

Chen, M., Macaluso, M., Blackwell, R., **Galvão, L.**, Kulczycki, A., Diaz, J., Jamieson, D., Duerr, A. (2007). Self-reported mechanical problems during condom use and semen exposure: comparison of two randomized trials in the United States of America and Brazil. Poster Presentation, *17th International Society for Sexually Transmitted Diseases Research Meeting, 10th IUSTI World Congress*, Seattle, WA, July-August.

**Galvão, L.** (2007) Women at the Brazilian Borders: Needs and Challenges in HIV Prevention, Reproductive Health and Human Rights. *University of Wisconsin-Milwaukee, Center for Latin American Studies, Women's History Month Seminar*, Milwaukee, WI, March.

Brill, J., Shore, W., **Talsky, A.M.**, Stearns, J. (2007) Community Medicine—To Everything a Season. Lecture-Discussion. *Society of Teachers of Family Medicine's 33<sup>rd</sup> Annual Postdoctoral Education Conference*, p. 13, Memphis, TN, January.

Brown, R., Stokes, S. and **Frazer, D.** HIV, Hepatitis C, Overdose Prevention Project (H2O), A Community Empowerment Approach to Injury and Disease Prevention Implemented by the AIDS Resource Center of Wisconsin (ARCW). *UWPHI Biennial Conference: Improving Wisconsin's Health: Prevention, Policy and Priorities for Research*, Waukesha, WI, November.

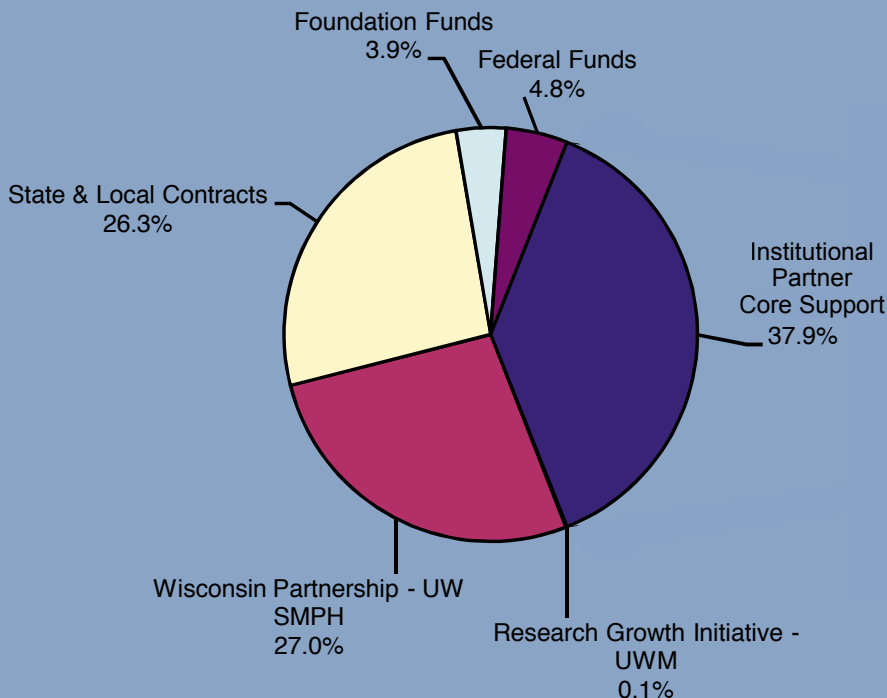
# Financial Capacity

The Center's financial capacity provides an answer to the question: *How can we best channel financial resources in a positive way to address population health needs?* By leveraging its three institutional partners' contributions in a way that limits duplication of human and physical resources, the Center provides the best outcomes for the community and a solid return on investment for its institutional partners.

From 2003-2007, infrastructure funds from the Center's institutional partners – the University of Wisconsin School of Medicine and Public Health, the University of Wisconsin–Milwaukee, and Aurora Health Care, Inc.–totalled approximately \$2.34 million. With these funds, the Center leveraged another \$6.1 million in extramural funding to its institutional and community partners. Overall, approximately \$2.61 has been returned for every \$1 invested. During the same time span, the Center has experienced a four-fold increase in its annual operating budget from approximately \$520,000 in 2003 to \$2 million in 2007.

The chart below describes sources of funding for the Center in 2007.

## Center for Urban Population Health Sources of Funds 2007 Actual (\$1,903,942)



## 2007 Resources

---

### Wisconsin Partnership Programs (\$513,227)

- Health Care Task Force on Pre- and Inter-Conception Care
- Homicide Review Commission
- Milwaukee Regional Cancer Care Network
- Multi-Level Information Systems and Health Promotion Interventions for Milwaukee's School Children
- PeriData: A Rural/Urban Information Network
- Public Health Development Plan
- Safe Mom, Safe Baby
- Starting Strong: Early Childhood Integrated Database System: Implementation and Evaluation grant to UWM
- Survey of the Health of Wisconsin (SHOW)
- Wisconsin Network for Health Research (WiNHR)
- Wisconsin Research and Education Network (WREN)

### State and Local Contracts (\$502,467)

- American Geriatric Society, Online CME
- City of Milwaukee Health Department
- Marquette Dental School, Geriatric Oral Health Website
- UWM Research Growth Initiative Grant
- Wisconsin Registry for Alzheimer's Prevention with the Wisconsin Alzheimer's Institute
- Wisconsin Association of Perinatal Care, Perinatal Database Technology Development.
- Wisconsin Hospitals (~80 hospitals statewide), PeriData.Net™ System Maintenance and Service

### Federal (\$91,617)

- Center for Substance Abuse Treatment of the US Substance Abuse and Mental Health Services Administration
  - Wisconsin Initiative to Promote Healthy Lifestyles (WIPHL)
- Midwest AIDS Training & Education Center
- National Institutes of Health's National Institute on Aging,
  - K01 Mentored Career Award – Scott Strath, PhD
- National Institute on Alcohol Abuse & Alcoholism, NIH
  - Cost Effectiveness of Alcohol Dependence Treatment
- National Institutes of Health
  - Proactive Risk Assessment of Primary Care of the Elderly (with WREN)
- Office of Justice Assistance
  - City of Milwaukee Homicide Review Records Needs Assessment

### **Foundations (\$74,127)**

- Faye McBeath Foundation
  - E-Sight Maintenance and Development to Prevent Blindness Wisconsin
- Greater Milwaukee Foundation
  - Telemedicine in Milwaukee's Schools (TIMES)
- Helen Bader Foundation
  - Starting Strong: Early Childhood Integrated Database System Information Technology grant to UWM
- Robert Wood Johnson Foundation
  - Weight Management for a Defined Employee Population Using an Interactive e-Health Portal
- Silberman Fund
  - Development of a Lifecourse Timeline Followback Approach to Assessing Alcohol Dependence Recovery and Change Attempts grant to the UWM Center for Addiction and Behavioral Health Research
- The Wellpoint Foundation
  - The Greater Milwaukee Committee, Trends in School-Based Health Initiatives

### **Institutional Partner Core Support (\$722,504)**

- UW School of Medicine and Public Health
- UW-Milwaukee
- Aurora Health Care, Inc.





ALL SAINTS HEALTHCARE ST LUKES HEALTH PAVILION AMERY REGIONAL MEDICAL CENTER AIDS RESOURCE CENTER OF WISCONSIN ALVERNO COLLEGE AMERICAN GERIATRICS SOCIETY ARMS AROUND ARMANI NEIGHBORHOOD ASSOCIATION ASPIRUS WAUSAU HOSPITAL AURORA BAYCARE MEDICAL CENTER AURORA CENTER FOR SENIOR HEALTH AND LONGEVITY AURORA CONSOLIDATED LABORATORIES AURORA FAMILY CARE CLINIC AURORA HEALTH CARE INC AURORA LAKELAND MEDICAL CENTER AURORA MEDICAL CENTER KENOSHA AURORA MEDICAL CENTER MANITOWOC COUNTY AURORA MEDICAL CENTER OSHKOSH AURORA MEDICAL CENTER WASHINGTON COUNTY AURORA MEMORIAL HOSPITAL OF BURLINGTON AURORA MIDWIFERY CLINIC AURORA MILWAUKEE HEART INSTITUTE AURORA SCHOOL BASED NURSES AURORA SHEBOYGAN MEMORIAL MEDICAL CENTER AURORA SINAI MEDICAL CENTER AURORA SINAI SEXUAL ASSAULT TREATMENT CENTER AURORA ST LUKES COMPREHENSIVE CARDIOVASCULAR CARE LLP AURORA ST LUKES EMERGENCY DEPARTMENT AURORA ST LUKES FAMILY PRACTICE CENTER AURORA ST LUKES TRANSPLANT RESEARCH LAB AURORA UW MEDICAL GROUP BALDWIN AREA MEDICAL CENTER BAY AREA MEDICAL CENTER BEAVER DAM COMMUNITY HOSPITAL BELLIN MEMORIAL HOSPITAL БЕЛОIT MEMORIAL HOSPITAL BERLIN MEMORIAL HOSPITAL BLACK RIVER MEMORIAL BOSQUEL AREA HEALTH CARE BOSTON UNIVERSITY BRIGHTER FUTURES BROWN UNIVERSITY BUREAU OF HEALTH INFORMATION BURNETT MEDICAL CENTER CANCER INFORMATION SERVICES CENTER FOR ADDICTION AND BEHAVIORAL HEALTH RESEARCH CENTER FOR THE STUDY OF DIVERSITY IN HEALTHCARE CENTER FOR TOBACCO RESEARCH AND INTERVENTION CITY OF MILWAUKEE CITY OF MILWAUKEE HEALTH DEPARTMENT CITY OF RACINE HEALTH DEPARTMENT COLUMBIA CENTER LLC COLUMBIA UNIVERSITY COLUMBUS COMMUNITY HOSPITAL COMMUNITY MEMORIAL HOSPITAL COMPREHENSIVE CANCER CENTER CREAM CITY MEDICAL SOCIETIES HIV SYMPOSIUM PLANNING STEERING COMMITTEE CUMBERLAND MEMORIAL HOSPITAL DOOR COUNTY MEMORIAL HOSPITAL ELMBROOK MEMORIAL HOSPITAL FORT MEMORIAL HOSPITAL FRANCISCAN SKEMP HEALTHCARE FRANCISCAN SKEMP HEALTHCARE ARCADIA FRANCISCAN SKEMP HEALTHCARE SPARTA FROEDTERT HOSPITAL GASTROENTEROLOGY CONSULTANTS LTD GRANT REGIONAL HEALTH CENTER GREATER GALILEE MISSIONARY BAPTIST CHURCH GREATER MILWAUKEE COMMITTEE GUNDERSEN LUTHERAN MEDICAL CENTER INC HARVARD UNIVERSITY HAYWARD AREA MEMORIAL HOSPITAL HEALTH ADVOCACY FOR THE SPANISH SPEAKING RESIDENTS HEALTH CARE TASK FORCE ON PRE- AND INTER-CONCEPTION CARE HEALTHY BIRTH OUTCOMES: ELIMINATING RACIAL AND ETHNIC DISPARITIES STATEWIDE ADVISORY WORKGROUPS HOLY FAMILY MEMORIAL MEDICAL CENTER IMPACT INSTITUTE FOR SURVEY AND POLICY RESEARCH INSTITUTE FOR URBAN HEALTH PARTNERSHIPS LAKEVIEW MEDICAL CENTER LANGLADE MEMORIAL HOSPITAL LUTHERAN SOCIAL SERVICES LUTHER HOSPITAL LUTHER MIDELFORT NORTHLAND MADISON BIRTH CENTER MARQUETTE UNIVERSITY MARSHFIELD CLINIC RESEARCH FOUNDATION MEDICAL COLLEGE OF WISCONSIN MEMORIAL HEALTH CENTER MEMORIAL HOSPITAL INC MEMORIAL HOSPITAL OF LAFAYETTE COUNTY MEMORIAL MEDICAL CENTER MERCY HEALTH SYSTEM MERCY MEDICAL CENTER MERITER HOSPITAL MIDWEST AIDS TRAINING AND EDUCATION CENTER MILE BLUFF MEDICAL CENTER MILWAUKEE ALLIANCE FOR SEXUAL HEALTH MILWAUKEE BIRTHING PROJECT MILWAUKEE CENTER FOR INDEPENDENCE MILWAUKEE COMMUNITY HEALTH ASSESSMENT MILWAUKEE COUNTY DEPARTMENT ON AGING MILWAUKEE COUNTY DEPARTMENT OF HEALTH AND FAMILY SERVICES MILWAUKEE FETAL INFANT MORTALITY REVIEW MILWAUKEE HEALTH CARE PARTNERSHIP INC MILWAUKEE HOMICIDE REVIEW COMMISSION MILWAUKEE LATINO HEALTH COALITION MILWAUKEE PUBLIC SCHOOLS MILWAUKEE REGIONAL CANCER CARE NETWORK MILWAUKEE RIVER BASIN PARTNERSHIP MONROE CLINIC AND HOSPITAL MOTHERS AGAINST GUN VIOLENCE NEW CONCEPT SELF DEVELOPMENT CENTER NEW LONDON FAMILY MEDICAL CENTER OCONOMOWOC MEMORIAL HOSPITAL OSCEOLA MEDICAL CENTER PARTNERSHIPS FOR HEALTHY MILWAUKEE POPULATION HEALTH INSTITUTE PRAIRIE DU CHIEN MEMORIAL HOSPITAL PRENATAL CARE COORDINATION PROGRAM PREVENT BLINDNESS WISCONSIN REEDSBURG AREA MEDICAL CENTER RESEARCH TRIANGLE INSTITUTE RICHLAND HOSPITAL RIVERSIDE MEDICAL CENTER RIVERVIEW HOSPITAL ASSOCIATION RUSK COUNTY MEMORIAL HOSPITAL SACRED HEART HOSPITAL SAINT MICHAELS HOSPITAL SAUK PRAIRIE MEMORIAL HOSPITAL SHAWANO MEDICAL CENTER SILVER SPRING NEIGHBORHOOD CENTER SIXTEENTH STREET COMMUNITY CLINIC SOCIAL DEVELOPMENT COMMISSION SOUTHERN ILLINOIS UNIVERSITY SOUTHWEST HEALTH CENTER SPOONER HEALTH SYSTEM STATE OF WISCONSIN VITAL RECORDS DEPARTMENT ST AGNES HOSPITAL ST CLARE HOSPITAL ST CLARE HOSPITAL AND HEALTH SERVICES ST ELIZABETH HOSPITAL ST FRANCIS HOSPITAL ST JOSEPHS COMMUNITY HEALTH SERVICES INC ST JOSEPHS HOSPITAL ST JOSEPHS HOSPITAL MINISTRY HEALTH CARE ST JOSEPHS REGIONAL MEDICAL CENTER ST MARYS HOSPITAL ST MARYS HOSPITAL OZAUKEE CAMPUS ST MARYS HOSPITAL MEDICAL CENTER ST VINCENT HOSPITAL TASK FORCE ON FAMILY VIOLENCE TEEN PREGNANCY PREVENTION NETWORK TOMAH MEMORIAL HOSPITAL TRANSITION TO ADULT SERVICES UNITED HOSPITAL SYSTEM INC UNITED WAY'S TEEN PREGNANCY OVERSIGHT COMMITTEE UNIVERSITY OF MIAMI UNIVERSITY OF NEW MEXICO UNIVERSITY OF NORTH CAROLINA UNIVERSITY OF PITTSBURGH UNIVERSITY OF SOUTH CAROLINA UNIVERSITY OF TEXAS UNIVERSITY OF WASHINGTON UNIVERSITY OF WISCONSIN MADISON UNIVERSITY OF WISCONSIN MILWAUKEE UNIVERSITY OF WISCONSIN SCHOOL OF MEDICINE AND PUBLIC HEALTH UPLAND HILLS HEALTH INC URBAN FOOD AND FITNESS: RESEARCH AND EVALUATION COMMITTEE URBAN FOOD AND FITNESS STEERING COMMITTEE VERNON MEMORIAL HOSPITAL VETERANS ADMINISTRATION HEALTHY AGING CLINICS WAUKESHA MEMORIAL HOSPITAL WAUPUN MEMORIAL HOSPITAL WEST ALLIS MEMORIAL HOSPITAL WESTFIELDS HOSPITAL WHEATON FRANCISCAN SERVICES WISCONSIN ALZHEIMERS INSTITUTE WISCONSIN ASSOCIATION OF PERINATAL CARE WISCONSIN BUREAU OF HEALTH INFORMATION WISCONSIN DEPARTMENT OF HEALTH AND FAMILY SERVICES WISCONSIN FETAL ALCOHOL SPECTRUM DISORDERS PREVENTION AND INTERVENTION PROJECT ADVISORY COMMITTEE WISCONSIN HEALTH WATCH WOMEN'S HEALTH CENTER AT AURORA SINAI MEDICAL CENTER WORKING CONSORTIUM ON THE INCLUSION AND CARE OF THE UNDER REPRESENTED IN CLINICAL RESEARCH WISCONSIN RESEARCH AND EDUCATION NETWORK