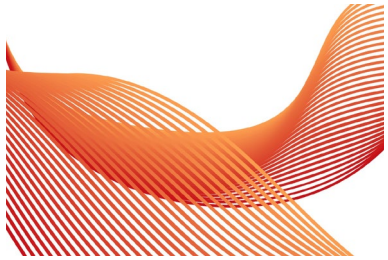




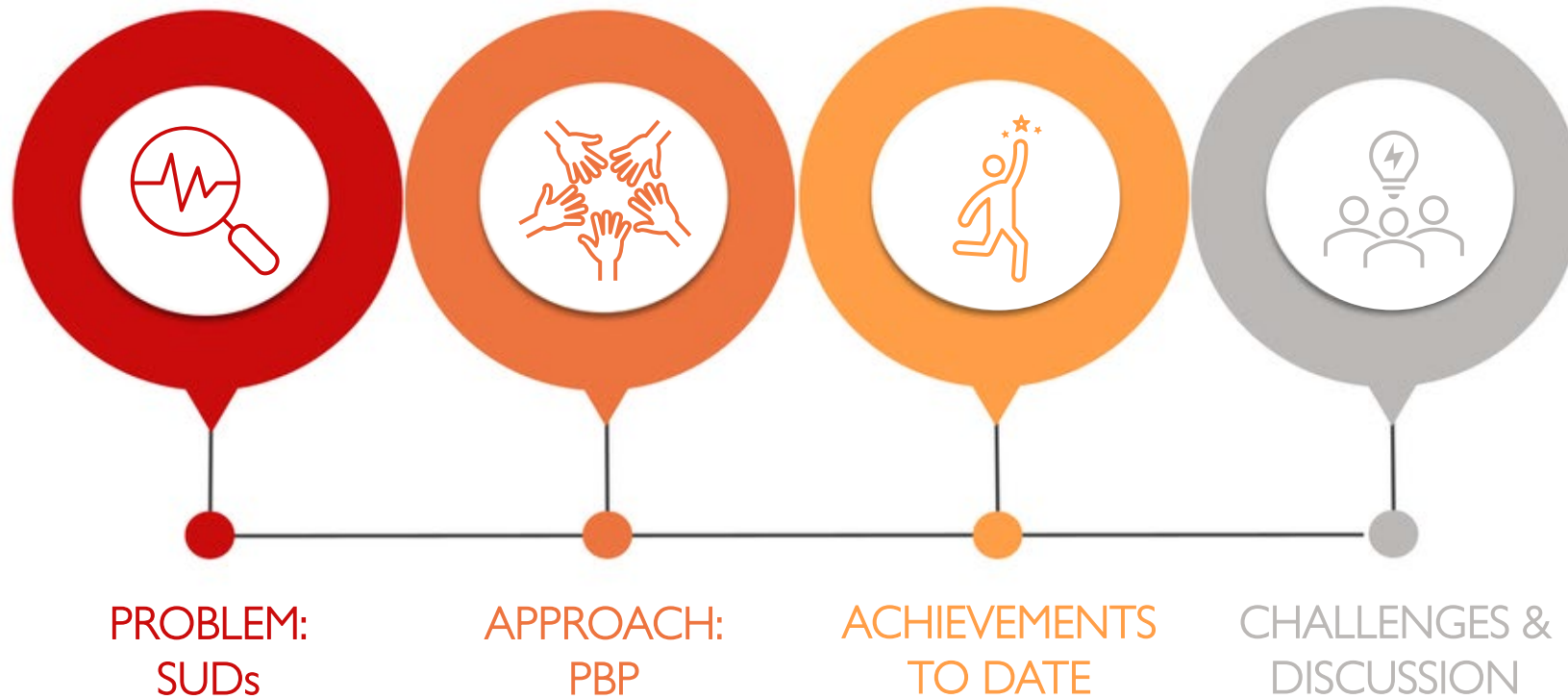
Promoting Best Practices

CUPH Seminar Series

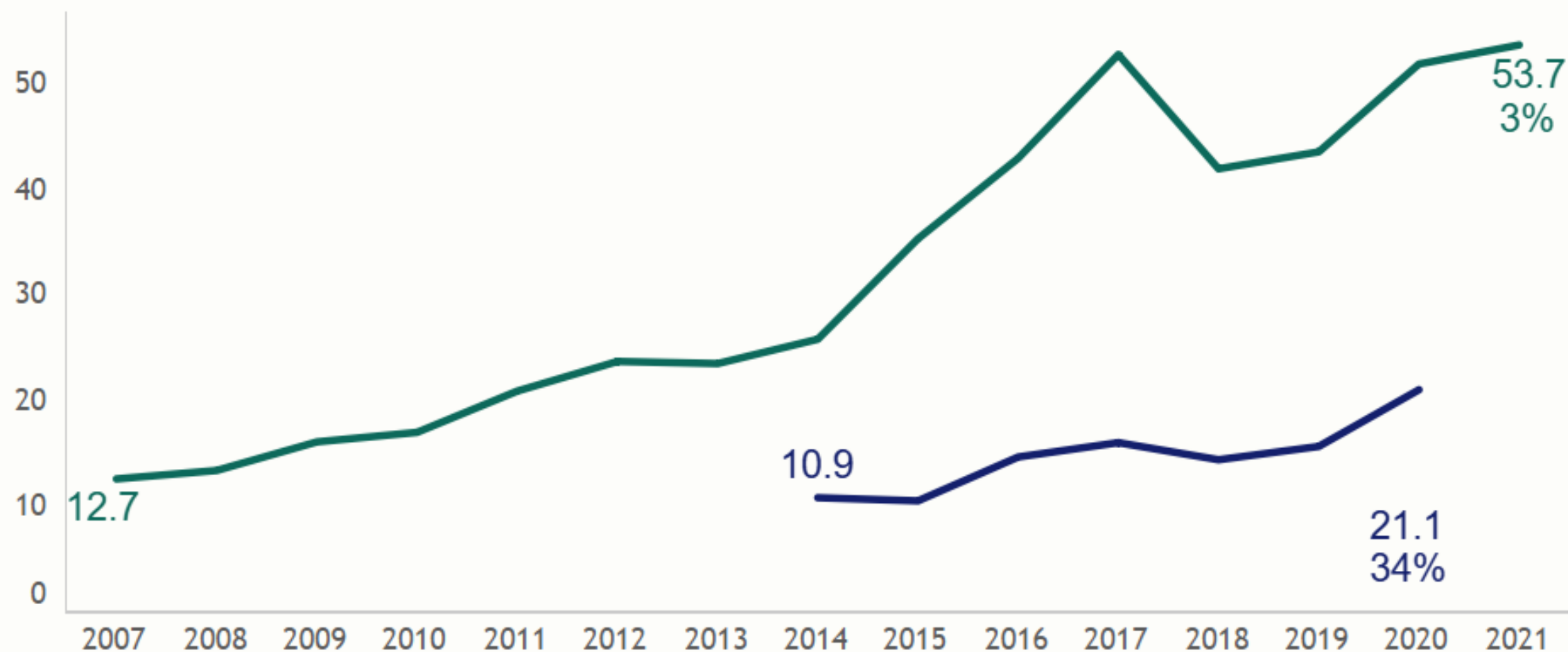
June 17, 2022



Overview

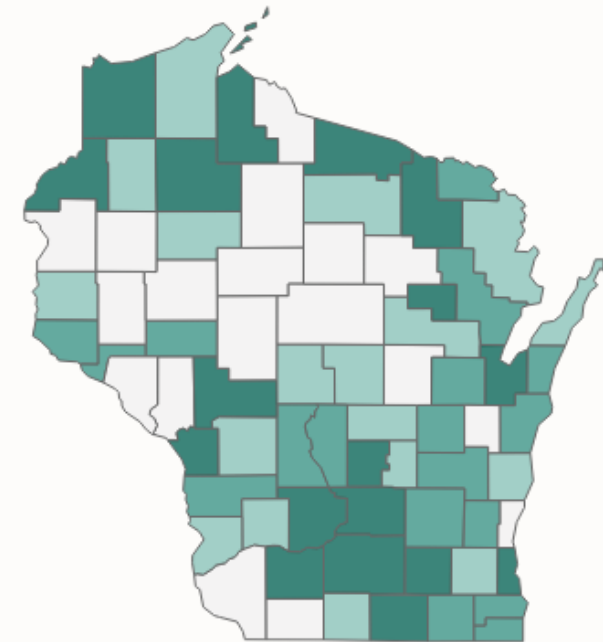
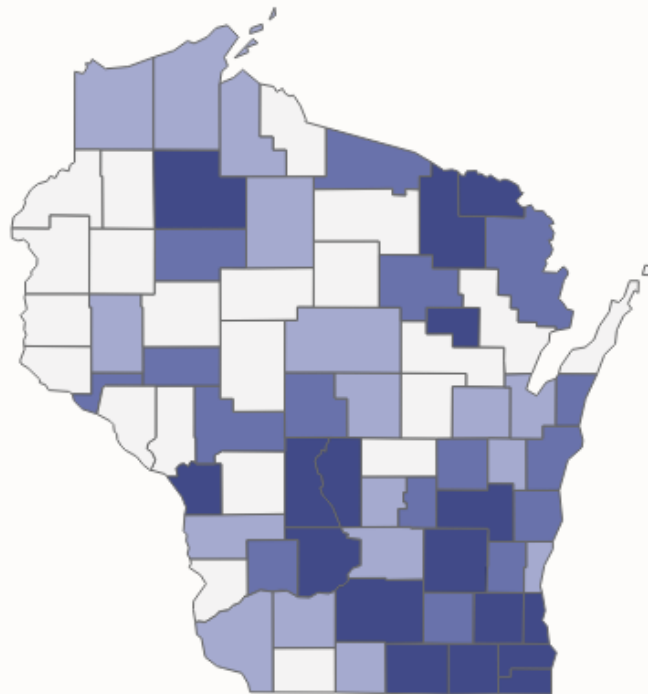


Rate per 100,000 of Opioid-Related Deaths and Emergency Room Hospitalizations



As of **10/31/2021**, there have been **1,064** opioid-related deaths in the year.

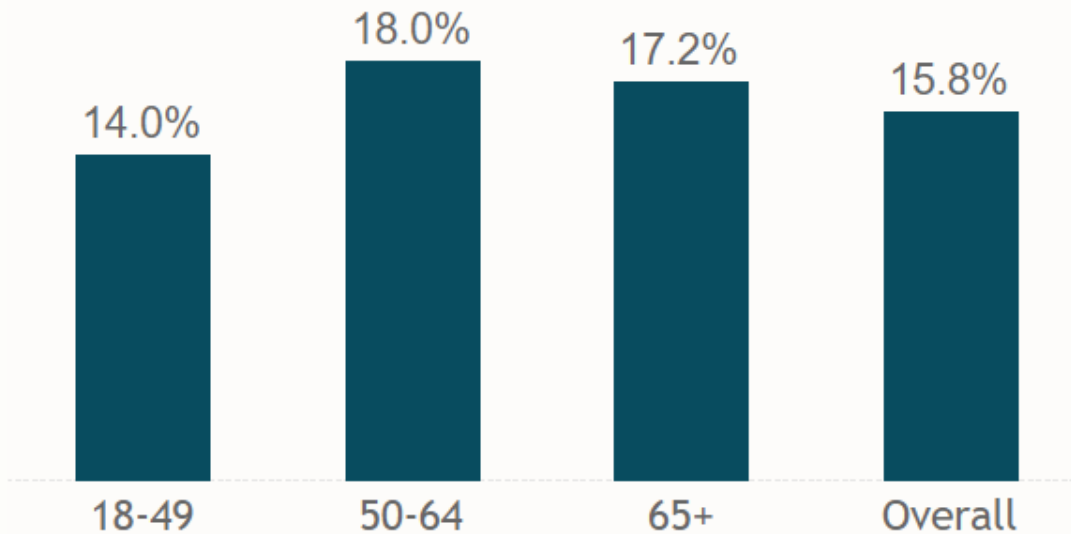
As of **12/31/2020**, there have been **4,187** opioid-related inpatient and emergency room hospital visits in the year.



Rate per 100,000 of Opioid-Related **Deaths** and **Emergency Room Hospitalizations**

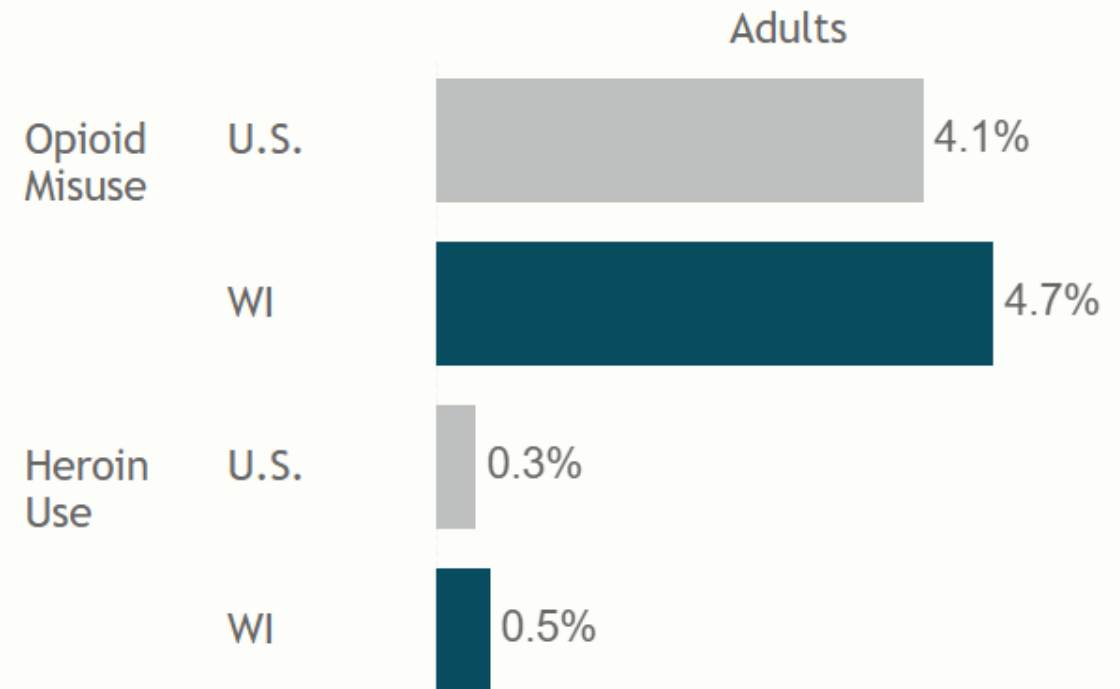
Use of Opioids and Heroin in Wisconsin

Proportion who Used a Prescribed Opioid in the Past Year: Wisconsin 2019



An estimated 1 in 6 Wisconsin adults (18+) were prescribed and used an opioid in the past year.

Estimated Proportion of Drug Misuse in the Past Year



Wisconsin Stimulant Deaths

2014–2020

Death Count

Death Rate per 100,000

Cocaine

1,595

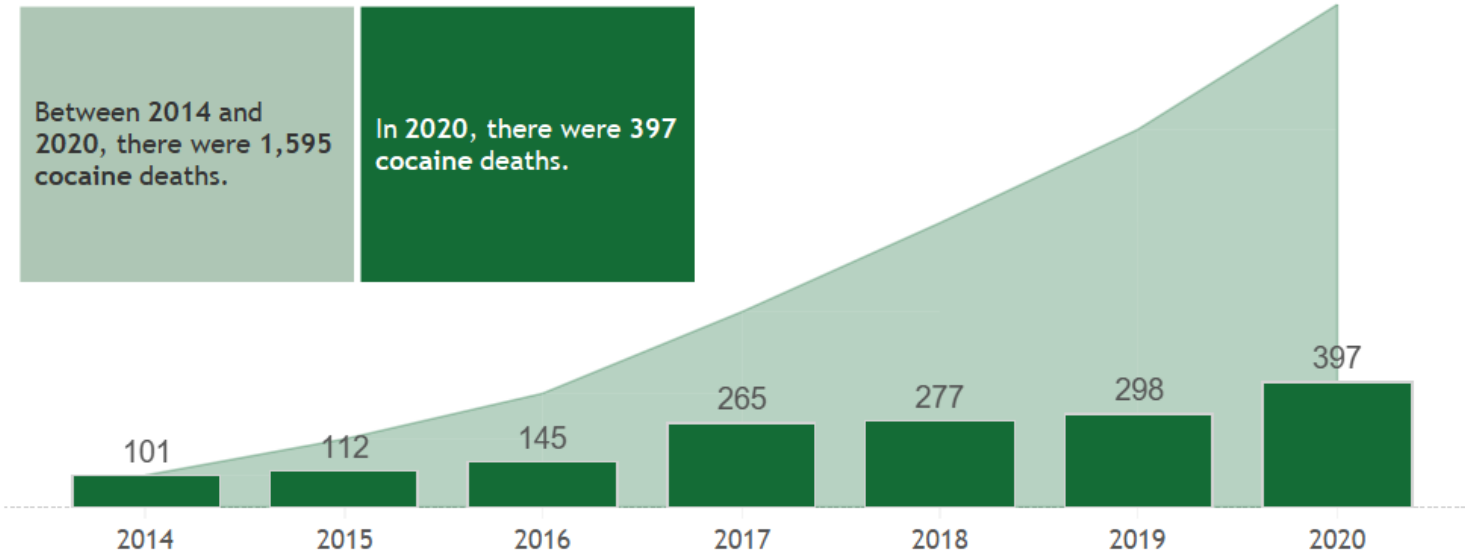
3.9

Other Psychostimulants

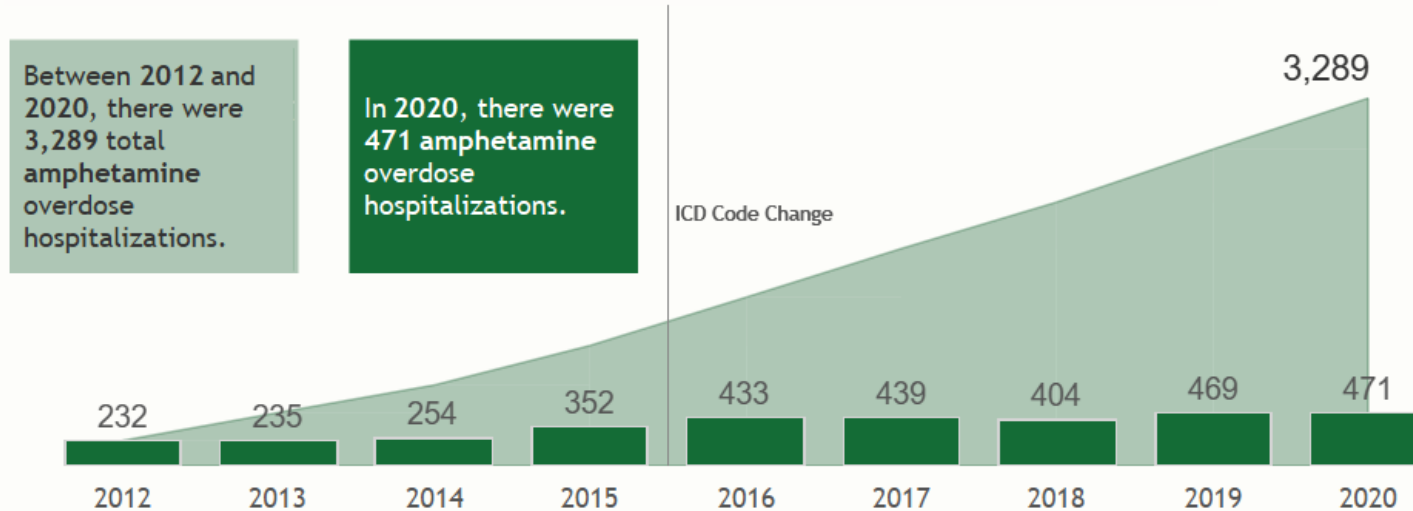
823

2.0

Annual and Cumulative **Cocaine Deaths** Over Time

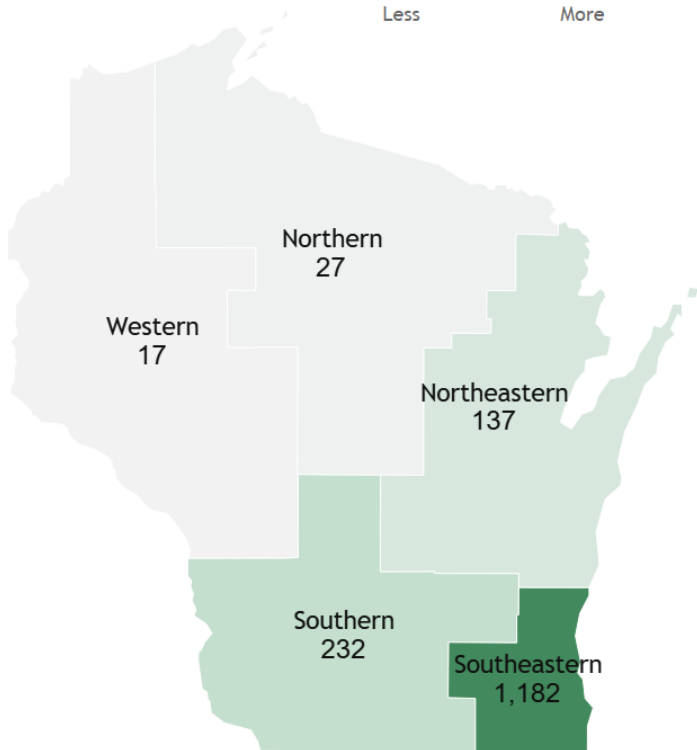


Annual and Cumulative **Amphetamine Overdoses** Over Time



Cocaine Death Count (2014-2020)

By Region



By Age and Sex

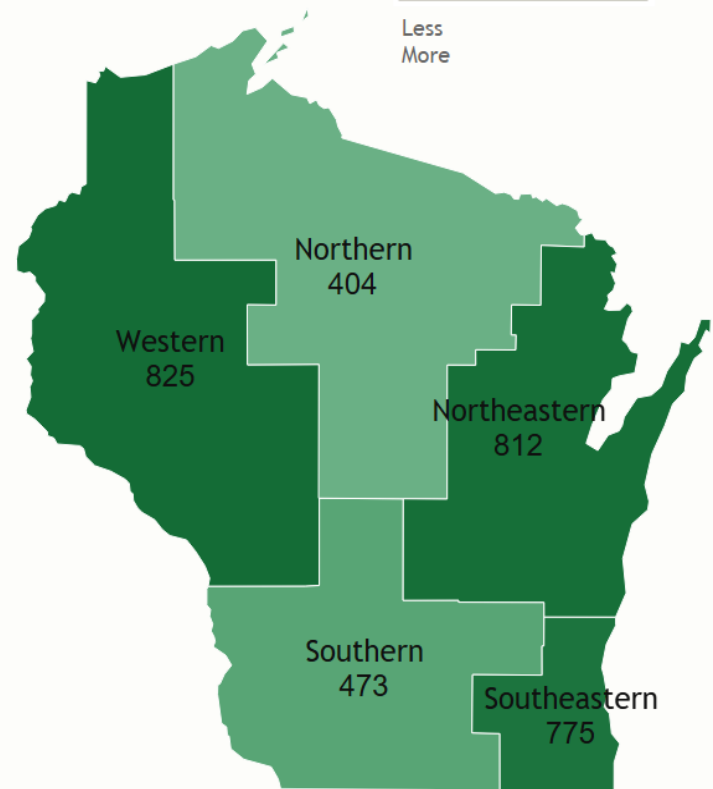
	Female	Male
Under 17	N/A	N/A
18-44	278	583
45-64	194	487
Over 65	6	45

By Race and Ethnicity

White	1,119
Black	435
American Indian	33
Asian	8
Hispanic	111
Non-Hispanic	1,481

Hospitalizations Involving Amphetamines (2012-2020)

By Region

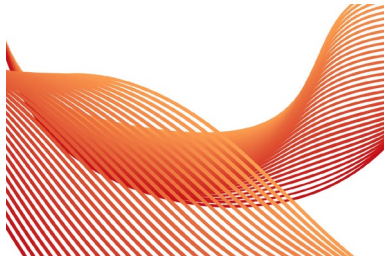


By Age and Sex

	Female	Male
Under 17	315	317
18-44	897	1,365
45-64	177	197
Over 65	12	9

By Race and Ethnicity

White	2,601
Black	254
American Indian	131
Asian	42
Other	261
Hispanic	140
Non-Hispanic	2,921



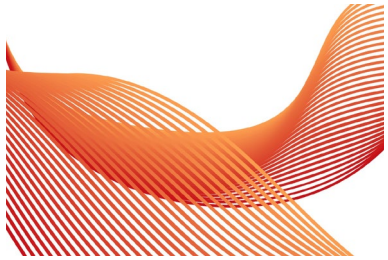
What We Do

Mission To provide a platform and opportunities for advancing collaborative and innovative behavioral health education, capacity training, peer-to-peer learning, and evaluation to professionals working in the substance use disorders field.

Vision The substance use prevention, treatment and recovery workforce provides quality, holistic services to Wisconsin residents.

Overarching Goals

- Promote best practice in substance use prevention, treatment and recovery services to professionals working in the substance use disorder field
- Develop collaborative relations with community, academic and governmental organizations to meet the needs and gaps in training in Wisconsin
- Develop and evaluate evidence-based education to support treatment professionals in Wisconsin.



Who We Are

Wisconsin CONNECT is a collaborative. It seeks to provide technical assistance and training opportunities for substance use prevention and treatment grantees, providers, clinicians, social workers, and support staff; drawing on local and national academic and community resources.

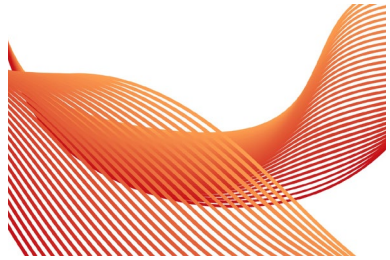
We do this to further reduce and prevent substance use in Wisconsin.

We do this in partnership among Wisconsin Department of Health Service's Division of Care and Treatment Services, Bureau of Prevention, Treatment and Recovery, Center for Urban Population Health and our network of training providers.



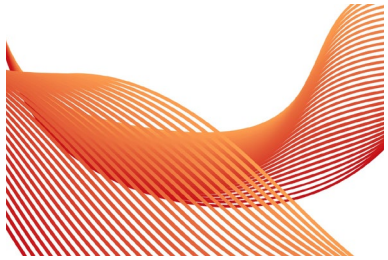
WISCONSIN DEPARTMENT
of **HEALTH SERVICES**





Our Approach





What We Provide



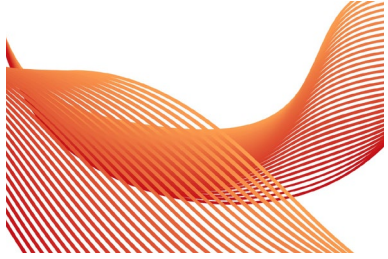
Online Training



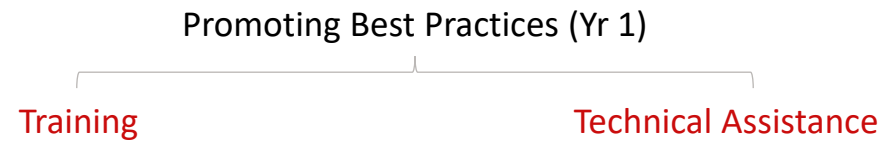
Virtual/Hybrid Conferences

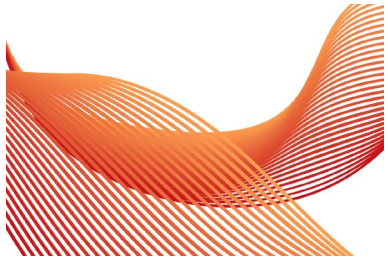


Peer Learning

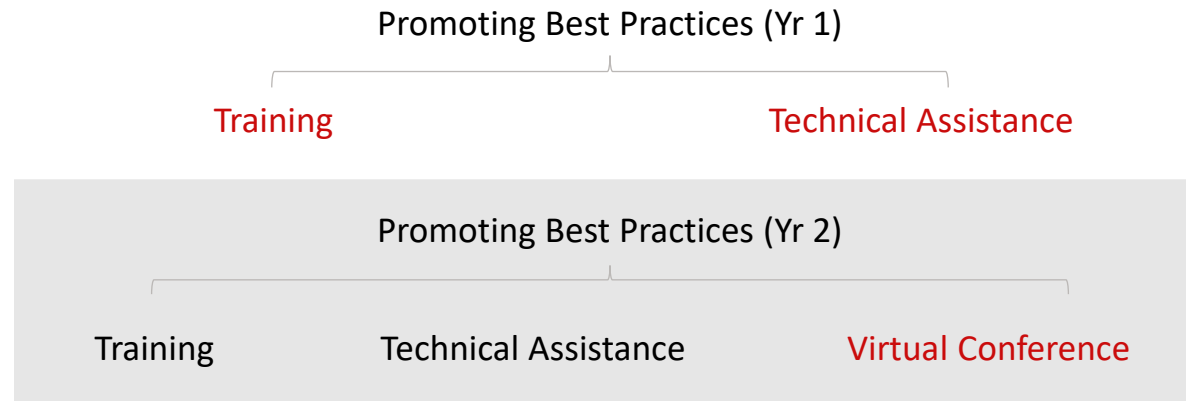


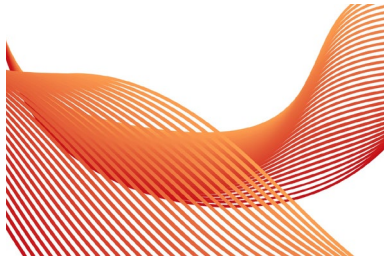
Growth and Evolution





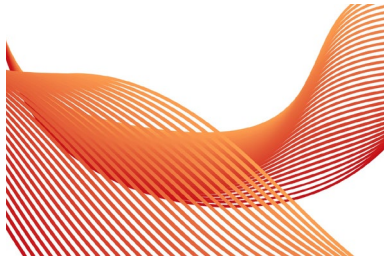
Growth and Evolution





Growth and Evolution





Promoting Best Practices (Yr 1)

Training

Technical Assistance

Promoting Best Practices (Yr 2)

Training

Technical Assistance

Virtual Conference

Promoting Best Practices (Yr 3)

Training

Technical Assistance

Hybrid Conference &
Meth Recovery Summit

Workforce Assessment

Tribal Adaptation of PCIT

Promoting Best Practices (Yr 4)

Training

Technical Assistance

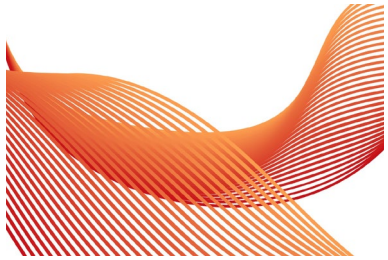
Hybrid Conference &
Meth Recovery Summit

Workforce Assessment

Tribal Adaptation of PCIT

Prevention Conference

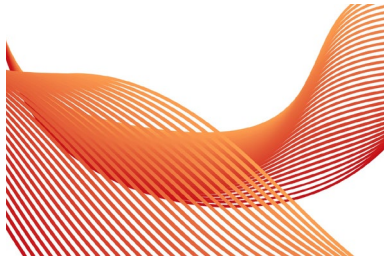
Harm Reduction Conference



What We've Accomplished

Since July 2020, we have ...

- Developed the Wisconsin CONNECT website: www.wisconsinconnect.org
- Provided 600+ technical assistance consultations
- Offered training from 70+ trainers/facilitators

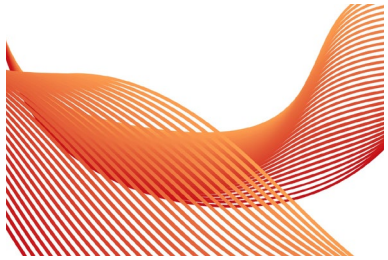


What We've Accomplished

80+ trainings provided¹, including:

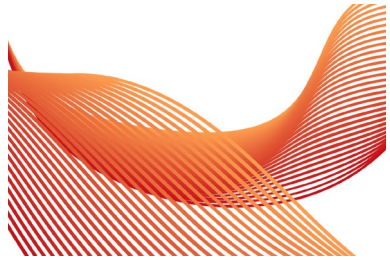
- Two certificate programs developed from scratch: Total of 4 cohorts
 - Substance Use & Pregnancy Certificate Program
 - FASD² Training of Trainers Certificate Program
- Two ECHO³ programs: 31 sessions
 - Women & Substance Use ECHO
 - ASAM⁴ ECHO
- ASAM Criteria Course: 7 trainings
- Matrix Model Training: 5 trainings

Nearly 100 hours of on-demand training content recorded



What We've Accomplished

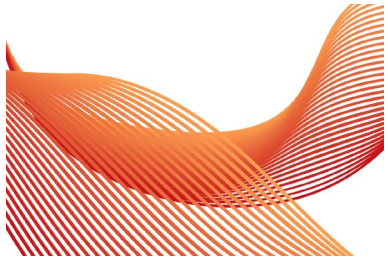
Annual Opioids, Stimulants, & Trauma Summit	2021	2022
Registrants	669	778
Virtual	669	446
In-person	--	332
Sessions	12	29
Keynotes	3	5
Breakout Sessions	9	24
Continuing Education Hours Distributed	3,555	11,038



What We've Accomplished

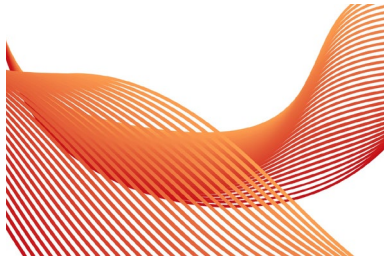
Who benefits?

- 2,330+ unique individuals have participated in programming
- Common job titles/credentials include:
 - Case Manager
 - Counselor or Therapist
 - Peer Support Specialist
 - Recovery Coordinator
 - Physicians and nurses
 - CSAC (Clinical Substance Abuse Counselor)
 - CSW (Clinical Social Worker)
 - LMFT (Licensed Marriage & Family Therapist)
 - LPC (Licensed Professional Counselor)
 - SAC (Substance Abuse Counselor)



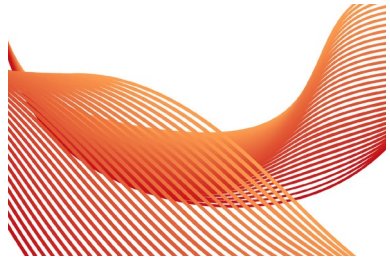
What We've Accomplished

Evaluation Metrics	First 8 months	Next 7 months
Satisfied with training	80%	88%
Expectations were met	60%	76%
Likely to attend future training	63%	83%
Likely to recommend training	67%	78%
Comfortable implementing training content	88%	92%



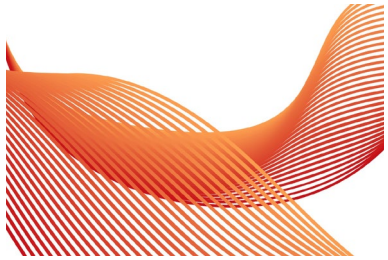
Evaluation Challenges

- How to best assess participants' intent to implement
- Response rates
- Finding the right balance:
 - Keeping evaluations brief and manageable for training participants
 - Gathering information requested by funders (subject to change!)
 - Assessing training quality and improving future programming



Program Challenges

- Training promotion and outreach
- Depending on funding tied to legislation
- Staying organized/Program management (Welcome, Cora!)
- Covid (of course...)
 - Continue virtual training?
 - Offer in-person training?
 - Make all training hybrid?



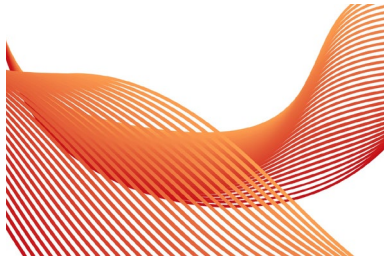
Your Advice For Us

Evaluation

- Assessing intent to implement
- Response rates
- Balancing multiple evaluation needs

Program

- Promotion & outreach
- Funding sources tied to legislation
- Organization/Program management
- Virtual vs. in-person vs. hybrid training



Wisconsin CONNECT Team

Bernestine Jeffers, Project Strategist (JeffersB@uwm.edu)

Carrie Stehman, Senior Research Specialist (cmstehman@wisc.edu)

Cora Knight, Event Coordinator (knightca@uwm.edu)

David Frazer, Man Friday & Factotum (dfrazer@wisc.edu)

Elizabeth Duthie, Evaluator/PI (eaduthie@uwm.edu)

With appreciation to other contributors:

Lonnetta Albright

Kyle Mounts

Lisa Berger

Tamara Reed

Iniko Caesar

Georgiana Wilton