



2021
Annual
Report



CUPH

**Center for Urban
Population Health**

*Data-driven. Evidence-based.
Community-engaged.*



CUPH

Center for Urban
Population Health

Data-driven. Evidence-based.

Community-engaged.

OUR MISSION

Advancing population health research and education to improve the health of urban communities.

OUR VISION

To be a destination where researchers can lead innovative, community-connected urban population health research and education.

OUR PRINCIPLES AND VALUES

- Promoting a **population health framework** as a unifying approach for addressing health determinants, interventions, and outcomes
- Forging **equitable and sustainable partnerships** with community and academic experts from diverse organizations, backgrounds, and disciplines
- Creating an environment of **innovation**
- Using research to **impact** effective policies, programs, and practices
- **Fostering knowledge transfer** through clinical and community-based learning
- **Reducing health disparities**
- Delivering **exceptional value** by integrating the best available resources and methodologies to address key issues with **integrity, objectivity, and responsiveness**

The Center for Urban Population Health is a partnership among the UW School of Medicine and Public Health, UW-Milwaukee and Advocate Aurora Research Institute. Founded in 2001, we are celebrating our 20th anniversary.



DIRECTOR LETTER	4
SOCIAL DETERMINANTS OF HEALTH NAVIGATION IN A HEALTH CARE SETTING	5
MOVING FROM VISION TO REALITY	6
PUBLIC HEALTH MEETS PRIMARY CARE	7
USING DATA TO IMPROVE SUD TREATMENT	8
IMPROVING CHILDREN'S MENTAL HEALTH	9
FILLING THE HMONG DATA GAP	10
BY THE NUMBERS	11
HUMAN CAPACITY	12
CENTER SCIENTISTS AND AFFILIATES WITH ACTIVE PROJECTS	13
SELECTED PRESENTATIONS AND PUBLICATIONS	15

Greetings from the Center for Urban Population Health!

Dear Colleagues,

As you know, we are celebrating our 20th anniversary as the Center for Urban Population Health. This past year, we celebrated by hosting a monthly “20th Anniversary” seminar series to support shared learning within CUPH regarding the numerous ongoing activities within the center- <https://www.cuph.org/seminarseries.html>.



These seminars were held live on the third Friday of every month and recorded for individuals to visit. These seminars highlight the programmatic and technical expertise of the CUPH staff and program in working with community partners to support implementation science research in partnership with diverse community organizations, state, county and local health. Other organizations include the Milwaukee Public Schools, and non-profits with projects relating to systems environmental and policy change to development of new materials



for training health professionals on substance abuse and disorders, organizing large stakeholder conferences, and new surveys to inform services for the Hmong community.

In case you missed this over the past year, we have selected a few to highlight in our 2021 annual report. Please enjoy learning about our work over the past year and if you want to learn more, click on the links at the end of each article to watch the video archive or view the slides.

Sincerely,

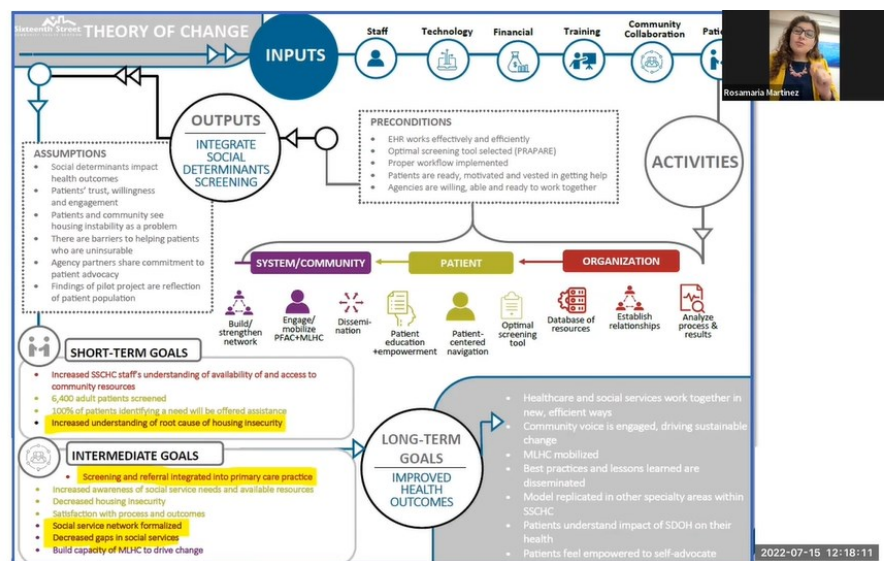
Kristen Malecki, PhD, MPH

Social Determinants of Health Navigation in a Health Care Setting

Funded by the Wisconsin Partnership Program, this project, initiated in 2019, aims to gain a deeper understanding of the socio-economic factors, such as housing insecurity, that influence health on the south side of Milwaukee.

The process of implementing universal screening for social needs among primary care patients at Sixteenth Street Community Health Centers has been used to develop a collaborative model for health care and social service delivery to close these health gaps and improve health outcomes for patients.

The Center's Michelle Corbett, Academic Partner and Lead Evaluator, presented with Rosamaria Martinez, Vice President of Community Health Initiatives, and Anna Klonowski, SDoH Integration and Outreach Manager, from Sixteenth Street Community Health Centers.



This presentation shares information about the purpose and goals of the project, the screening and referral model implemented in primary care settings with over 5,300 patients to date, the evaluation approach, some initial findings from the first 3.5 years of the project, and ideas for the future.

[Video Archive](#)

[Slides](#)

Moving from Vision to Reality

The Milwaukee Partnership Research Study: Moving from Vision to Reality

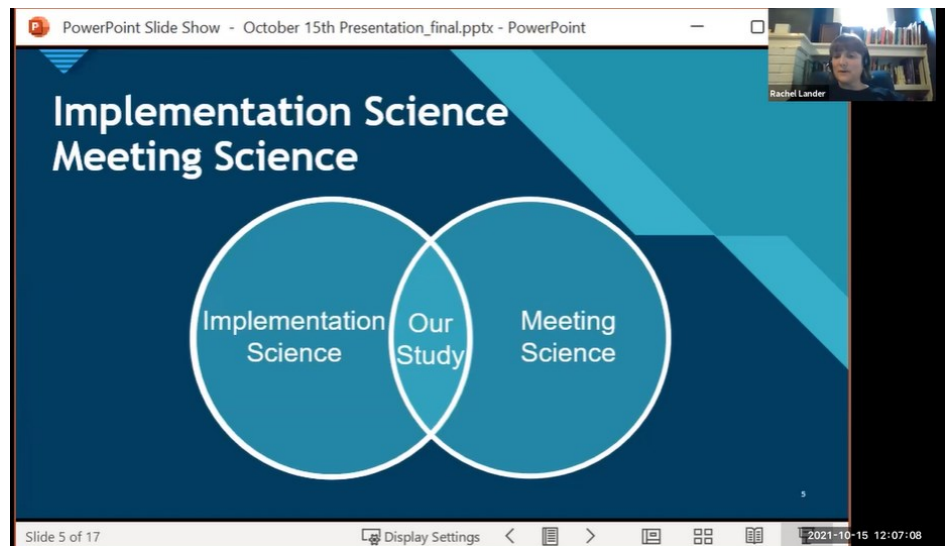
Elizabeth Duthie, Rachel Lander, and Kaija Zusevics presented findings from their study that began with the research question: what are challenges and catalysts to moving an aim forward?

They highlighted two academic fields of study that provided the foundation for this research:

implementation science and meeting science.

Extensive analysis of the data revealed that the key to moving the aim forward was utilizing a systematic process during meetings to keep the meetings concrete and actionable. The systematic process included: defining the aim, determining baseline data, creating a scope of work that was manageable, measuring progress toward the aim, engaging implementors' buy-in, and establishing concrete and actionable steps to move the aim forward.

Further, they found that a set of meeting tools provided a structure for keeping meetings concrete and actionable. In this presentation,



they shared the findings of their research study: they have created a replicable process – one that is observable, measurable, and teachable – that can help organizations and coalitions implement their initiatives and reach their goals.

[Video Archive](#)

[Slides](#)

Public Health Meets Primary Care

Wisconsin's Collaborative Approach to Increase Colorectal Cancer Screening: Where public health meets primary care

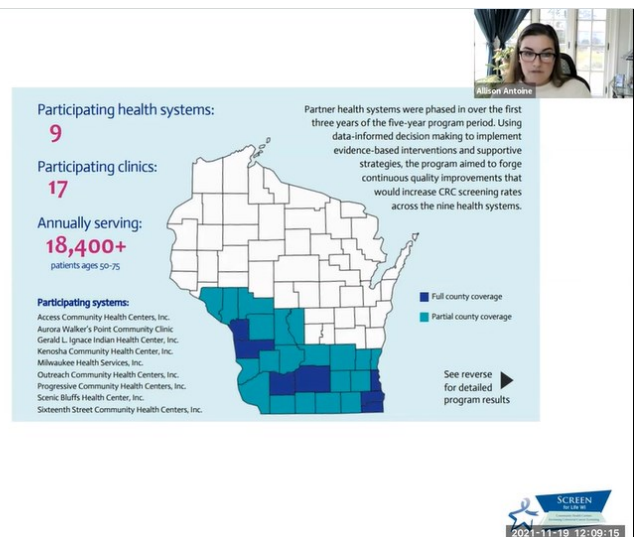
Allison Antoine and Michelle Corbett presented a review of the five-year, CDC-funded Colorectal Cancer Control Program that took place from 2015-2020.

Designed to address racial and ethnic disparities in colorectal cancer screening, the project partnered with Federally Qualified Health Centers. Allison and Michelle will highlight the project's programmatic and evaluation purpose, goals, and strategies, share process and outcome findings, and discuss lessons learned.

They were joined by two project partners: Sarah Francois (Progressive Community Health Centers) and Janet Malmon (Outreach Community Health Centers). Sarah and Janet shared details of their organizations' efforts to improve colorectal cancer screening rates and their perspectives on how this partnership contributed to their organizations' outcomes.

Wisconsin's Colorectal Cancer Control Program

2015–2020



Additionally, both partners discuss how the pandemic had an impact on this work in both challenging and rewarding ways.

[Video Archive](#)

[Slides](#)

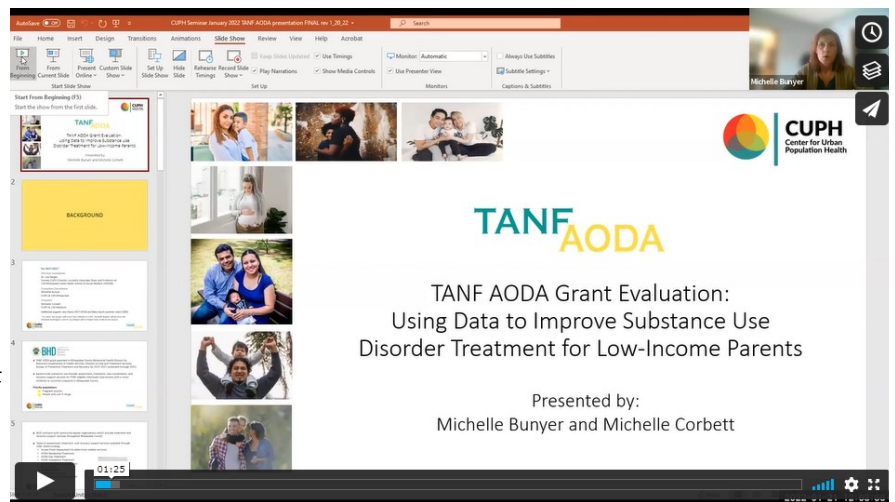
Using Data to Improve SUD Treatment

TANF AODA Grant Evaluation: Using Data to Improve Substance Use Disorder Treatment for Low- Income Parents

Michelle Bunyer and Michelle Corbett presented information from their work with the Milwaukee County Behavioral Health Division (BHD) supporting implementation of the Temporary Assistance for Needy Families Alcohol and Other Drug Abuse (TANF AODA) grant.

Awarded in 2017 by the State of Wisconsin Department of Health Services to BHD, this grant funds outreach, treatment, and recovery support services for low-income parents with a substance use disorder and who have minor children living in Milwaukee County.

Michelle and Michelle shared how they cultivated strong relationships with the BHD grant team and helped build the team's capacity to practice data-driven decision-making. As well, they discussed how they navigated their role as external evaluators for a community partner with an existing internal evaluation team.



Additionally, they share the various original data collection techniques and how they implemented and supported quality improvement initiative across the providers.

[Video Archive](#)

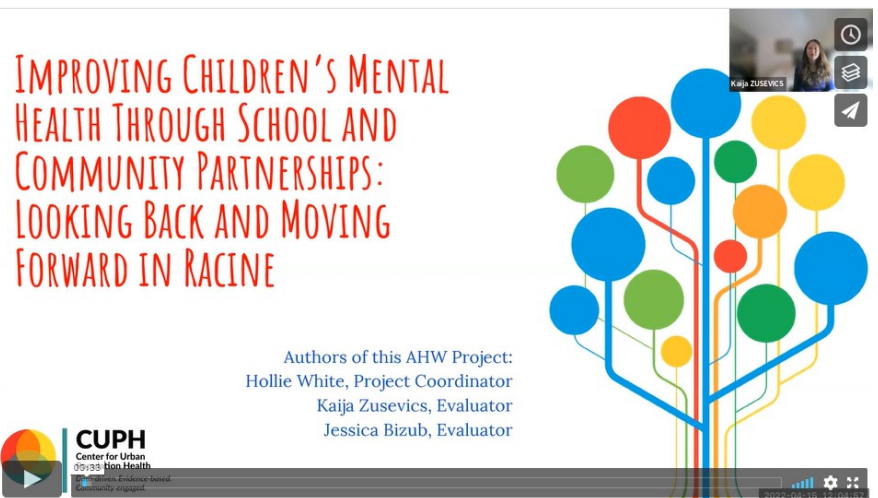
[Slides](#)

Improving Children's Mental Health

Improving Children's Mental Health Through School and Community: Looking Back and Moving Forward in Racine

Funded by the Healthier Wisconsin Partnership Program, a component of the Advancing a Healthier Endowment at the Medical College of Wisconsin, this project was one of 10 projects of their commitment to mental and behavior health in Wisconsin.

Social emotional learning skills are linked to school achievement; however, the social emotional health of students is often not systematically assessed. In the Racine Unified Schools District (RUSD), this is not systematically assessed past 4K. The next available data on social emotional health of RUSD students is collected in 7th grade and reveal a downward trajectory in the social emotional health of youth between 4K and 7th grade. To improve behavioral health in the community, project partners have identified the social emotional health and development of young children as a priority in order to develop early interventions and policies that can have long-term, positive impacts.



This presentation described the 8-year project in Racine that aims to improve the social emotional health of children. The team briefly outline the funding mechanism and structure, detail our 4 main strategies, and highlight plans for sustainability.

The presentation also included discussion on the collaborative role between the project manager and the evaluators that supported the use of data-driven decision making and strategic planning in each strategy.

[Video Archive](#)

[Slides](#)

Filling the Hmong Data Gap

From Inking to Evidence: Filling the Hmong Data Gap through a Behavioral Health Needs Assessment

In order to begin filling the data gap regarding behavioral health needs in the Hmong community, the Hmong American Friendship Association partnered with the Center for Urban Population Health in 2021 to conduct a behavioral health needs assessment of adult Hmong in Wisconsin.

Funded through a grant from the Wisconsin Department of Health Services, the project developed a survey assessing exposure to trauma, PTSD, depression, and anxiety symptoms, substance use, experiences with and barriers to seeking and receiving behavioral health treatment.

Michelle Corbett and partners from the Hmong American Friendship Association, Lo Neng

Presenters



Lo Neng
Kiatoukaysy
*Executive
Director*



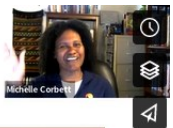
Lang
Xiong
*Health
Advocate*



Sandra
Christensen
*Consultant/
Grant writer*



Michelle
Corbett
*Researcher/
Evaluator*



Kiatoukaysy, Lang Xiong, and Sandra Christensen, presented on a statewide behavioral health needs assessment. They discussed the why behind the assessment, describe how it was carried out, and share key findings and how they have been used so far. They also reflected on this first-time partnership and lessons learned.

[Video Archive](#)

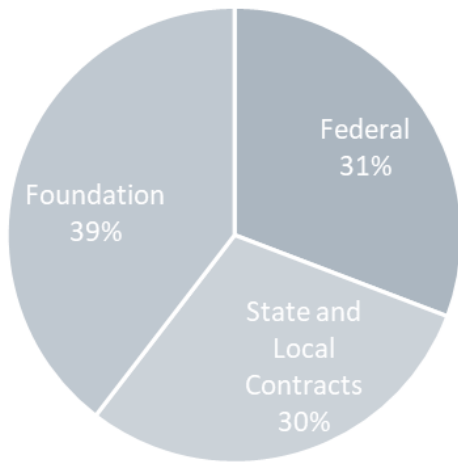
[Slides](#)

By the Numbers

2021

The return on the Center's mission and joint partnerships translates into a healthy and sustainable Center and significant financial support to local initiatives.

Extramural Funding



Across 31 projects.



\$360,000 invested in 2021 from founding institutions, Advocate Aurora Research Institute, UW-Milwaukee, and UW School of Medicine and Public Health

\$3.3 million in grants and contracts awarded in 2021 to Center faculty and staff

For every \$1 invested, we have returned 9.3 times in extramural funding.



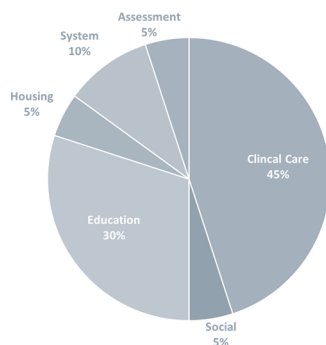
2021 Center and Affiliate Program staff

Staffing	FTE
Administrative	1.0
Core Staff	6.55
Affiliate Staff	19.75
Total	27.30

Project Summary

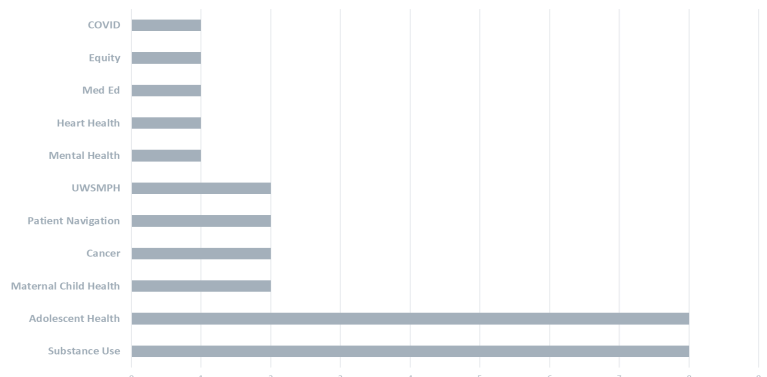
The following two charts are different ways we can categorize our projects and get a sense of the breadth of our work.

Projects By Population Health Categories



Clinical care refers to projects that have a focus for improving clinical care. Social refers to projects that focus on the social environment. Housing and Education are sectors of focus. System refers to the ways in which organizations work together.

Projects By Topics



Substance Use Includes: Tobacco Surveillance, TANF/Women focused, SUD Training, SUD Workforce Assessment, Expansion of Meth Training, Youth Justice

Human Capacity

2021

2021 Faculty & Staff

Allison Antoine, B.S., CHES

Patricia A. Batemon, M.S.

Jessica Bizub, B.A.

Michelle Bunyer, M.A.

Ian Canovi, B.S.

A. Michelle Corbett, M.P.H., CHES

Elizabeth Duthie, Ph.D.

Bashir Easter, Ph.D.

Gina Green-Harris, M.B.A.

Diamond Hanson, Dr.P.H., M.P.H.

Kayla Heslin, M.P.H.

Stephanie Houston, M.B.A.

Tara Jackson

Bernestine Jeffers

Vivian King

Jessica J.F. Kram, M.P.H.

Marianne Klumph, M.A.

Rachel Lander, Ph.D.

Melissa Lemke, M.A.

Preneice G. Love, M.B.A., C.L.C.

Gail Morgan, B.A.

Nia Norris, M.A., B.A.

Alex Schwank, M.P.H.

Mirtha Sosa-Pacheco

Karen A. Palmersheim, Ph.D.

Karen Pankowski

Celena Ramsey, B.S.

Tamara Reed

Atifa Robinson, B.S.

Carrie Stehman, M.A.

Sharon Williams, B.S.

Darona Woods

Kaija Zusevics, Ph.D.

LEADERSHIP



Kristen Malecki, Ph.D., M.P.H.

Director, Associate Professor of Population Health Sciences, University of Wisconsin

School of Medicine and Public Health



David Frazer, M.P.H.

Operations Director, UW School of Medicine and Public Health

INSTITUTIONAL LEADERSHIP COMMITTEE

Denise, Angst, Ph.D, RN

Vice President Academic Research and Strategic Partnerships, Advocate Aurora Research Institute

Kris O'Connor Ph.D.,

Associate Vice Provost for Research, Office of Research, Professor, Department of Kinesiology, University of Wisconsin-Milwaukee

Jonathan Temte, M.D., Ph.D, M.S.

Professor and Associate Dean for Public Health and Community Engagement, UW School of Medicine & Public Health

Our staff and faculty have joined the Center because of their desire to use their talents, skills, and expertise in partnership with providers, community leaders, organizations, and residents in identifying, testing, and evaluating solutions to the challenges that prevent communities from realizing their full health potential.

Center Scientists & Affiliates with Active Projects | 2021

Sanjay Asthana, MD, UW School of Medicine and Public Health

Howard Bailey, MD, UW School of Medicine and Public Health

Dennis Baumgardner, MD, Aurora UW Medical Group

Lisa Berger, PhD, UW Milwaukee

Krysta Bensen, Aurora Health Care

Jake Bidwell, MD, Aurora UW Medical Group

Dalvery Blackwell, BS, African American Breastfeeding Network of Milwaukee

Mary Briggs-Sedlacheck, RN, BSN, Aurora Research Institute

John Brill, MD, MPH, Aurora UW Medical Group

Michael Brondino, PhD, UW-Milwaukee

Maebe Brown, MS, WISEWOMEN Program

Randy Brown, MD, PhD, UW School of Medicine and Public Health

Michelle Buelow, MD, MPH, UW Madison

Tracy Buss, PhD, UW-Milwaukee

Andra Cicero, Aurora UW Medical Group

Ann Conway, RN, MS, MPA, WI Association for Prenatal Care

Kevin Cookman, MBA, Homeless Area Leadership Organization (HALO)

Thomas Chua, MD, FACS, Aurora Health Care

Jody Clark, Wheaton Franciscan All Saints Racine

James Cleary, MD, UW School of Medicine and Public Health

Rev. Will David, Invisible Reality Ministries

Darryl Davidson, MS, City of Milwaukee

Melissa DeNomie, MS, Medical College of Wisconsin

Benjamin Dorton, MD, Aurora UW Medical Group

Anne Dressel, PhD, UW-Milwaukee

Dorothy Edwards, PhD, UW Madison School of Education

Genyne Edwards, JD, WOO Connections

Terron Edwards, BASC, Running Rebels

Francine Feinberg, Meta House

Therese Fellner, PhD, Independent Contractor

Jennifer Fink, PhD, UW Milwaukee College of Health Sciences

Michael Fiore, MD, UW School of Medicine and Public Health

Paul Florsheim, PhD, UW Milwaukee Zilber School of Public Health

Marie Forgie, MD, Aurora UW Medical Group

Anne Getzin, MD, Aurora UW Medical Group

Amy Harley, PhD, MPH, RD, UW Milwaukee Zilber School of Public Health

Kayla Heslin, MPH, Aurora UW Medical Group

Natasha Hernandez, MD, Aurora UW Medical Group

Barbara Horner-Ibler, MD, Bread of Healing Clinic

Mark Huber, MPH, Aurora Health Care

Julie Hueller, MSM, Wheaton Franciscan All Saints Racine

Paul Hunter, MD, UW School of Medicine and Public Health

Tom Jackson, MD, UW School of Medicine and Public Health

Sheri Johnson, PhD, UW School of Medicine and Public Health

Vanessa Johnson, New Concept Self Development Center, Inc.

Ariba Khan, MD, Aurora UW Medical Group

Arianna Keil, MD, Pediatric Medical Home Program, Children's Hospital of Wisconsin

Mira Ketzler, RN, MSN, Aurora Health Care

Marianne Klumph, MA, Aurora UW Medical Group

Kjersti Knox, MD, Aurora UW Medical Group

Fabiana Kotovicz, MD, Aurora UW Medical Group

Jessica J.F. Kram, MPH, Aurora UW Medical Group

Andrea Libber, The Parenting Network

Jessica Link, MPH, MCHES, Wisconsin Division of Public Health

Noelle LoConte, MD, UW School of Medicine and Public Health

Leah Ludlum, RN, Wisconsin Department of Health Services

Laurie Lund, MSN, Aurora Sinai Medical Center NICU

Jake Luo, PhD, UW-Milwaukee

Tatiana Maida, SHARE Collective

Michael Malone, MD, Aurora UW Medical Group

Kristen Malecki, PhD, MPH, UW School of Medicine and Public Health

Mary Mazul, CNM, UW Milwaukee, Ascension Health

Susan McRoy, PhD, UW-Milwaukee, Computer Science

Mike Michalkiewicz, PhD, Aurora Health Care

Nigeria Nealy, African American Breastfeeding Network of Milwaukee

Emmanuel Ngui, DrPH, UW-Milwaukee, Zilber School of Public Health

Kevin O'Brien, LMFT, LCSW, Aurora Family Service

Steve Ohly, RN, NPC, Aurora Health Care

Kal Pasupathy, PhD, Aurora Research Institute

Jane Pirsig, MSW, MBA, Aurora Family Services

Vani Ray, MD, Aurora Health Care

Clare Reardon, MBA, APR, Milwaukee Health Care Partnership

Shelly Reid, MSN, Aurora Sinai Medical Center NICU

Michelle Rimer, PhD, UW-Milwaukee College of Health Science

Susan Rose, PhD, UW-Milwaukee Helen Bader School of Social Welfare

Lisa Robinson, RHIA, Aurora Health Care

Julie Rothwell, United Way

Nikki Salvo, MD, Aurora Health Care

Dawn Shelton-Williams, LCSW, Aurora Family Service

Deb Simpson, PhD, Aurora UW Medical Group

Marahaj Singh, PhD, Aurora Research Institute

Pamela Smith, MS, Kenosha County Division of Health

Chris Sorkness, PharmD, RPh, UW School of Medicine and Public Health

Greg Stadter, MPH, Milwaukee Health Care Partnership

Lisa Sullivan Vedder, MD, Aurora UW Medical Group

Glenda Sunberg, NP, Aurora UW Medical Group

Geof Swain, MD, MPH, UW School of Medicine and Public Health

Joy Tapper, MPA, Milwaukee Health Care Partnership

Claudia VanKoningsveld, WISDOM (Wisconsin's Interfaith Coalition)

Ellen Velie, PhD, UW-Milwaukee Zilber School of Public Health

Regina Vidaver, PhD, UW School of Medicine and Public Health

Kurt Waldhuetter, MS, Aurora Research Institute

Renee Walker, DrPH, UW-Milwaukee Zilber School of Public Health

Trina Salm Ward, PhD, MSW, UW-Milwaukee Helen Bader School of Social Welfare

Marianne Weiss, DNSc, RN, Marquette University, College of Nursing

Jane Witt, AS, Racine Interfaith Coalition (RIC)

Stacey Yonkoski, MD, MSW, LCSW, Wheaton Franciscan All Saints Racine

Aleksandra Zgierska, MD, PhD, UW School of Medicine and Public Health

2021 Students Mentored

UWSMPH/TRIUMPH/Pop Health

Alexis Ray, MD Candidate

Daniel Arndorfer, MD Candidate

Peter Ngo, MD Candidate

Samantha Prince, MD Candidate

Claudia Evaristo, MD Student

Juanita Fernandez, MD Student

Pa Ta Xiong, MD Student

Zoey Shultz, MD Student

Kristianna Klammer, MD Student

Donovin (Dani) Widmann, MD Student

Amanda Daley, Population Health Fellow

UW-Milwaukee

Shoua Vang, MPH student

Medical College of Wisconsin

Shanzay Suhail, MPH student

Mitali Deshpande, MPH student

Marquette University

David Chrisbaum

Selected Publications

2021

2021 Publications

Baumgardner DJ, Schwank A, Kram JJF, Lehmann W, Bidwell JL, La Fratta T, Copeland K. Seroprevalence of COVID-10 IgG antibody in resident physicians and fellows in metropolitan Milwaukee, Wisconsin: Analysis of a cross-sectional survey. *J Patient Cent Res Rev.* 2022; 9: 75-82.

Berger L, Lemke M, Van Koningsveld C, Yonkoski S, Feinberg F, Brondino M, & Galbis Reig D. (2021). Treatment of Substance Use Disorder and Psychological Trauma: Outcomes of the Women of Worth Program. Publication for *Journal of Social Work Practice in the Addictions.*"

Kram JJF, Montgomery MO, Perez Moreno AC, Romdenne TA, Forgie MM. Family-centered cesarean delivery: A randomized controlled trial. *Am J Obstet Gynecol MFM.* 2021; 3: 1-8.

Oakley LD, Lubeke J, Dosch NC, Snedden TR, Hernandez H, **Lemke MA**, et al. (2021). Traumatic Brain Injury Screening and Unmet Health Needs of Shelter-Seeking Women with Head Injuries Related to Intimate Partner Violence. Publication for *Women's Health Report.*

Ostroot MK, **Heslin K, Kram JJF, Tjoe JA, Dorton B.** Breast cancer recurrence risk after hormonal contraceptive use in survivors of reproductive age. *Eur J Obstet Gynecol.* 2021; 258:74-178.

Reimer, S., Pearce, N., Marek, A., Heslin, K., & Moreno, A.P. (2021). The Impact of Incarceration on Health and Health Care Utilization: a System Perspective. *Journal of Health Care for the Poor and Underserved* 32(3), 1403-1414. [doi:10.1353/hpu.2021.0140](https://doi.org/10.1353/hpu.2021.0140).

Tjoe JA, **Heslin K, Perez Moreno AC, Thomas S, Kram JJF.** Factors associated with breast cancer surgery delay within a coordinated multihospital community health system: When does surgical delay impact outcome? *Clin Breast Can.* 2021; Vol (No): 1-10.

William HM, **Heslin K, Kram JJF, Toberna CP, Baumgardner DJ.** Association of natural waterways and *Legionella pneumophila* infection in eastern Wisconsin: A case-control study. *J Patient Cent Res Rev.* In Press.

2021 Community Reports

The Milwaukee Partnership Research Study Report: Moving from Vision to Reality (2021), with **Elizabeth Duthie** and **Kaija Zusevics**, delivered to John & Tasha Morgridge and the leadership of the Milwaukee Partnership.

Palmersheim KA. Wisconsin Tobacco Facts: Adults (December 2021). Milwaukee, WI: University of Wisconsin-Milwaukee, Center for Urban Population Health; 2021 (December).

Palmersheim KA, Zusevics KL. Wisconsin Tobacco Facts: Adults (February 2021). Milwaukee, WI: University of Wisconsin-Milwaukee, Center for Urban Population Health; 2021 (February).

2021 Community Articles

Coping with Dementia-Patient and Caregiver Care April 22, 2021

<https://milwaukeeetimesnews.com/health-fitness-exercise-weight-loss-eating-right/coping-with-dementia-patient-and-caregiver-care>

Leveling the Field: In Milwaukee, the risk for Alzheimer's disease is greatest among Black, Asian and Latino communities. What's being done to bridge the gap in research and treatment?

https://www.mkelifestyle.com/healthandlifestyle/leveling-the-field/article_d85432be-b8e1-11eb-9074-57704e1ac6fb.html

1020 N. 12th Street, Suite 4180
Milwaukee WI 53233
414.219.5100
www.cuph.org



CUPH
**Center for Urban
Population Health**

*Data-driven. Evidence-based.
Community-engaged.*